

HIGH
SPEED & POWER

TURBO GRINDER & BLENDER

— With Heating Function —



Soya Milk



Dosa Batter



Soup



Besan Batter



3,000 W
Power



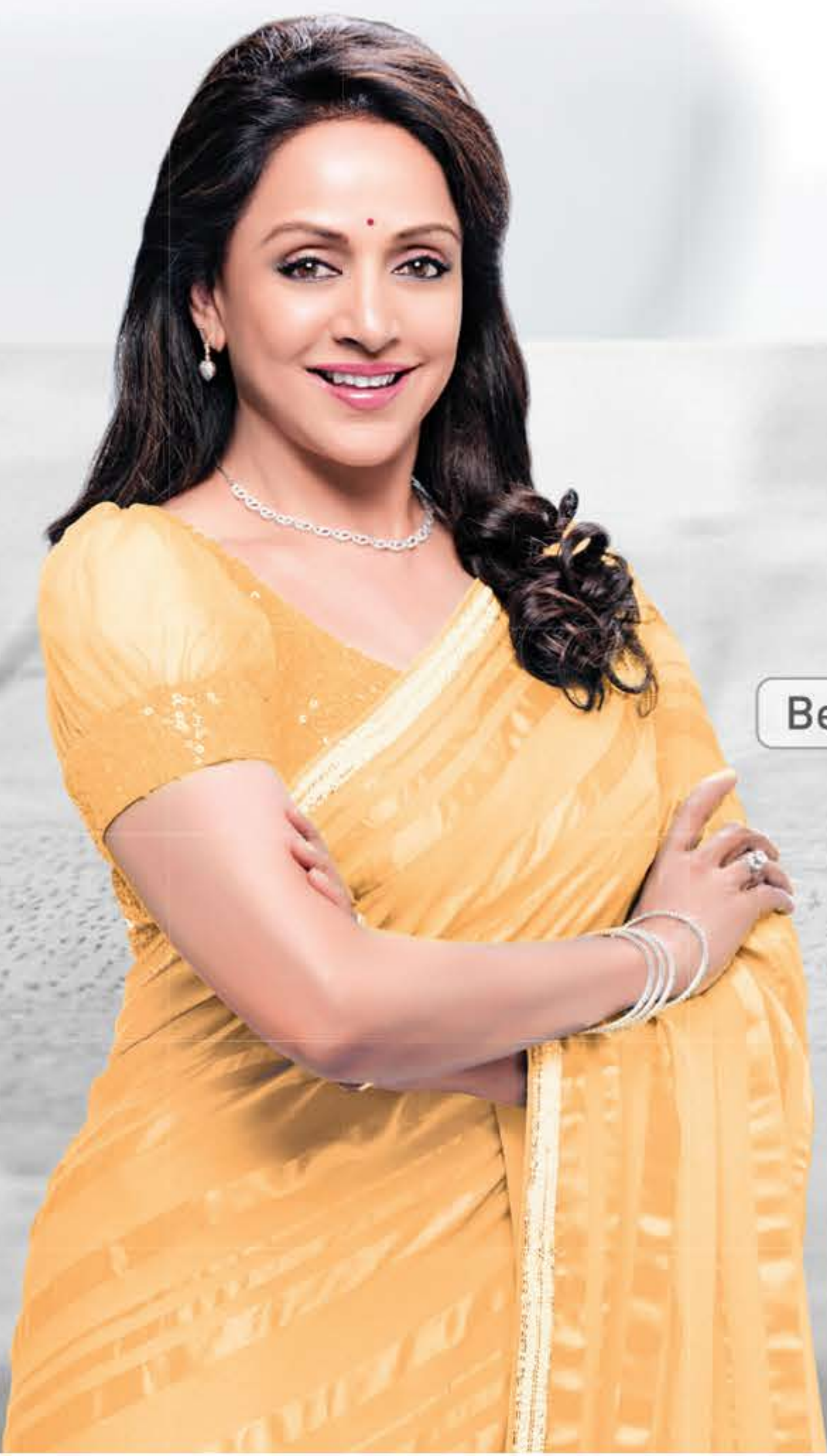
Glass Jar for
Hygienic Cooking



30,000 RPM
Speed

12 Preset Cooking Functions

Juice • Smoothie • Soy Milk • Porridge • Powder
• Chopped • Milk Shake • Ice-cream • Herb Tea
• Soup • Dosa Mix • Steam Cooked



Smoothie

Besan Batter

Dosa Batter



Cold Coffee

Soup

Welcome to KENT

Dear Customer,

Congratulations on your purchase and welcome to **KENT**.

At the outset, allow us to thank you for your trust in **KENT Smart Chef Appliances**. At KENT, we take pride in our reputation for quality products and industry proven performance. We are certain that you will be more than satisfied with **KENT Turbo Grinder & Blender's** performance and that it will serve you and your family's need without any compromise.

This guide would help you in getting the best out of your appliance. Please go through the booklet to familiarise yourself with its operation and maintenance.

With its robust built and quality, you can look forward to years of trouble-free service.

To ensure that the warranty of your appliance is effective, it is important that you fill up the enclosed warranty card and mail it to us within 15 days of purchase.

In case you require any further information, please contact your nearest **KENT** dealer / branch.

Happy Living.

KENT RO Systems Ltd.

TABLE OF CONTENTS

1. Introduction 1

2. Features of KENT Turbo Grinder & Blender..... 1

3. Know Your Product 1

4. Items in the Box 2

5. Instructions for Using KENT Turbo Grinder & Blender 2

6. Operation Panel Explained 2

7. LCD Panel Explained 3

8. Warnings 3

9. Function Selection 4

10. Tips..... 5

11. Cleaning & Maintenance. 5

12. Precautions..... 6

13. Important Safety Instructions 6

14. Technical Specifications 7

14. Troubleshooting 8

Introduction

We, at KENT have always believed that a clean and healthy life is a right of every individual. This ethos is what made us embark on a journey to develop innovative solutions for purifying water we drink, vegetables and fruits we eat, homes we live in and the air we breathe.

With use of an innovative technology and supported by a competent service network, we have been able to create a brand which has become synonym for well-being and health.

Continuing with the tradition, we now present the KENT Turbo Grinder & Blender, a new age high speed blender for home.

With this appliance, you can crush ice, prepare soup, soy milk and dosa batter in seconds.

FEATURES OF KENT TURBO GRINDER & BLENDER

- 1. High speed operation -runs at 30,000 rpm for faster grinding & blending.
- 2. High power motor for effortless grinding.
- 3. Heating function for preparing soup, herb tea and soy milk.
- 4. Preset menu options with automatic operation for extra convenience.
- 5. 12 preset menu for preparing: juice, smoothie, milk shake, ice-cream, soy milk, herb tea, dosa mix, porridge, soup, powder, mince and steam cooking.
- 6. Safety features like without lid and jar in place, the appliance won't start.
- 7. Overheating & overcurrent protection.
- 8. Glass jar for hygienic cooking.
- 9. Backlit large LCD display for ease of operations.
- 10. Multispeed operations with different speed for different operations.
- 11. ABS material body with stainless steel cladding.
- 12. Blades made of high grade stainless steel for high durability and life.

KNOW YOUR PRODUCT



- 1. Cap
- 2. Lid
- 3. Glass Jar
- 4. Handle
- 5. Blade
- 6. Base
- 7. Motor Unit
- 8. Digital LED screen & Operation panel
- 9. Push Rod

ITEMS IN THE BOX







- 1. KENT Turbo Grinder & Blender Base : 01 No.
- 2. Glass Jar with Cap and Lid : 01 No.
- 3. Push Rod : 01 No.
- 4. User Guide : 01 No.

INSTRUCTIONS FOR USING KENT TURBO GRINDER & BLENDER

- 1. Check the unit for damages. Do not use in case of any damages.
- 2. Before switching on the appliance, make sure that your home main voltage corresponds to the unit’s operating voltage.
- 3. Clean KENT Turbo Grinder & Blender before using the appliance for the first time [see ‘Cleaning & Maintenance’ section].
- 4. Make sure all parts are completely dry before you start using it.
- 5. Connect the appliance to main power supply.
- 6. You would hear a short beep followed by flashing lights.
- 7. Press the On/Off key once. The On/Off key would light-up to indicate that the appliance is ready.
- 8. Add the desired ingredients in the jar.
- 9. Press function key to choose the desired function.

Note: For safety reasons, the appliance would not start without jar properly attached or without jar lid properly secured.

OPERATION PANEL EXPLAINED

KEY	FUNCTION	
	This key can be used to cancel any mode or any preset function.	To stop/cancel the blender/mode press ‘Cancel’ key once.
	This key allows to choose from the preset menu.	To choose the preset menu press the key until the chosen program is selected.
	This key allows to preset the time as per convenience.	To set preferred time, press ‘Preset’ function till the desired speed is displayed.
	This key is to start or stop the appliance.	To start or stop the blender, press the key once.
	This key allows the blender to run in short burst with maximum speed.	Press the key once to run blender in short bursts.
	This key allows setting up of time.	Press arrow keys to increase or decrease time.

LCD PANEL EXPLAINED

Temperature: For Convenience, KENT Turbo Grinder & Blender displays temperature in celsius on the LCD screen.

Menu: The LCD display on KENT Turbo Grinder & Blender displays various functions available for day to day usage.

Menu	
Juice	Milk Shake
Smoothie	Ice-Cream
Soy Milk	Herb Tea
Porridge	Soup
Powder	Dosa Mix
Chopped	Steam Cooked

Warning Sign: For extra convenience KENT Turbo Grinder & Blender gives early warning signs in case of errors. The error signs are displayed in the LCD screen in the form of numbers.

Error	Status
E1	Thermistor disconnected
E2	Thermistor short circuited
E3	Over heat
E4	Jar lid not secured properly

WARNINGS

1. Before using the appliance ensure that the lid is secured properly. If its not secured properly, the appliance would not start.
2. Wash the glass jar from inside only and not from the outside. It should not be washed from outside as the water might sweep inside the control panel and damage it.
3. The ingredients quantity should not exceed the maximum level. Doing so would result in a spill over.
4. The glass jar need to be handled with care. It will break if it is dropped.

FUNCTION SELECTION

KENT Turbo Grinder & Blender comes with preset menu for quicker operation.

1. Juice: Preparation time 2 minutes

Put chopped fruits in the jar. Add some water to your choice. Put the lid and secure it properly. Select 'Juice' function. Press 'Start'. The juice should be ready in about 2 minutes.

2. Milk Shake: Preparation time less than a minute

To prepare yum and tasty shakes, wash and chop fruits. Put them in the jar. Add some milk & ice. Put the lid and secure it properly. Select 'Milk Shake' function. Press 'Start'. Milk shake should be ready in about 55 seconds.

3. Smoothie: Preparation time less than a minute

To prepare smoothie, put chopped fruits in the jar. Add ice (to your choice) and water or milk. Put the lid and secure it properly. Select 'Smoothie' from the menu. Press 'Start'. The refreshing smoothie should be ready in about 20 seconds.

4. Ice Cream: Preparation time less than a minute

Put some frozen fruit, cream and ice into the jar (to your choice). Put the lid and secure it properly. Select 'Ice-cream' from the menu. Press 'Start'. Use Push Rod to push the ingredients. Ice cream should be ready in 55 seconds.

5. Soy Milk: Preparation time half an hour

Put washed soya-bean, preferable overnight soaked (around 60 grams) in the jar. Add 1.4 liter of water. Put the lid and secure it properly. Select 'Soy Milk' function from the menu. Press 'Start'. Soy milk should be ready in 30 minutes.

6. Herb Tea: Preparation time 12 minutes

To prepare herb tea, add water in the jar. Place the lid and secure it properly. Select 'Herb Tea' function from the menu. Press 'Start'. The water would start to heat up. When water temperature reaches 98°C, add herb tea leaves by opening the removable cap. The herb tea should be ready in about 12 minutes.

7. Porridge: Preparation time around half an hour

To prepare porridge, put around 60 to 90 grams of whole grains and water in jar. Add other ingredients like milk, sugar (to your choice). Place the lid and secure it properly. Select 'Porridge' from the menu and press 'Start' to make porridge. The porridge should be ready in about 30 minutes.

8. Soup: Preparation time around 20 minutes

Wash and cut vegetable of your choice and put them in the jar. Add water (as required). Place the lid and secure it properly. Select 'Soup' from the menu and press 'Start' to make Soup. The soup should be ready in about 20 minutes.

9. Powder: Preparation time less than a minute

Put the ingredients for which powder is required in the jar (the maximum quantity should not exceed 500 grams). Place the lid and secure it properly. Select 'Powder' function from the menu. Press 'Start'. The grinded powder should be ready in about 45 seconds.

10. Dosa Batter: Preparation time less than 5 minutes

To prepare dosa batter, add overnight soaked rice and dal in right quantities (not exceeding 500 grams). Add water to your choice. Place the lid and secure it properly. Select the 'Dosa Mix' function, and press 'Start'. The unfermented dosa batter should be ready in around 4 minutes.

11. Chopped: Preparation time less than a minute

To make minced meat add 500 grams of clean and washed meat in the jar. Place the lid and secure it properly. Select 'Chopped' function from the menu and press 'Start' button once. The freshly minced meat should be ready in around 20 seconds.

12. Steam Cooked: Preparation time 20 minutes

Put washed ingredients in the jar. Add water. Place the lid and secure it properly. Select 'Steam Cooked' function from the menu and press 'Start' key once. Steam cooked vegetables should be ready in 20 mins.

Note:

- In case you wish to add sugar (applicable for item number 1-7), use pulse key for mixing it after the expiry of the set time.
- Ingredients added beyond maximum level will cause a spill over.

TIPS

Prepare hot and yum soup:

1. Potato not more than 320g.
2. Tomato not more than 280g.
3. Other vegetables around 30-50g of each style.
4. Meat or poultry (without bones) not more than 20-30g.

CLEANING & MAINTENANCE

1. Switch off and unplug the appliance and wait for it to cool down before cleaning it.
2. Remove the lid and clean the glass jar from inside with warm water and soap solution. Use cleaning brush. Never use scouring pads to clean it.
3. Wipe the main unit with a moist cloth and non-abrasive liquid cleaner.
4. Do not immerse the appliance in water or any other liquid.
5. Never put any part of the appliance in the dishwasher.
6. After cleaning it thoroughly, dry it using a soft cloth.
7. Ensure that the appliance is completely dry before storing it.

Note: Never immerse the motor unit of the Turbo Grinder & Blender in water, nor rinse it under the tap. Wipe it with a dry cloth.

PRECAUTIONS


1. Do not disassemble, repair or alter the appliance on your own. It may cause appliance failure or breakdown.
2. The input voltage must not exceed the rating; it might damage the appliance.
3. Unplug before replacing the cleaning/moving the appliance.
4. Do not use the appliance with damaged power cord or plug.
5. If power cord is damaged, replace it with a genuine KENT spare.
6. Do not install the appliance near any heat source, e.g., heater.
7. If the appliance is not to be used for long time, unplug it.
8. Do not sit on, stand on or shake the appliance.
9. Do not use the appliance when it is in recumbent or inclined position.

IMPORTANT SAFETY INSTRUCTIONS

When using an electrical appliance, basic precaution should always be followed, including the following:

1. Unplug, when not in use and before servicing.
2. To reduce the risk of electric shock, do not use near or on wet surfaces.
3. Use the appliance only as described in the manual.
4. Do not use the appliance if cord or plug is damaged or worn out. Replace the damaged cord or plug immediately.
5. Do not try to service the appliance on your own. Send it to an authorized service center only.
6. Keep cord away from heated surfaces.
7. Do not unplug the appliance by pulling the cord. Always unplug by pulling the plug and not the cord.
8. To avoid electric shocks, do not use the appliance with wet hands.
9. Keep hair, loose clothing, fingers and all parts of the body away from moving parts.
10. Turn all controls off before unplugging.
11. This appliance is suitable for Indoor use only.
12. Keep away from children.
13. The appliance is not designed to be used by people who, are physically or mentally disabled, mentally handicapped, lack of relevant experience and knowledge, unless a person responsible for their safety uses the product for supervision or guidance.

TECHNICAL SPECIFICATIONS

Model Name	KENT TURBO GRINDER & BLENDER
Model Number	116011
Net Weight	6.8 kg
Input Power Supply	Single Phase 220 V AC, 50 Hz. 
Power Consumption	3,000 W
Heater	840 W
Maximum Speed	30,000 RPM

TROUBLESHOOTING

PROBLEM	POSSIBLE CAUSE	POSSIBLE SOLUTION
The appliance does not start.	There is a connection problem.	Check if the appliance is connected to the mains and if the plug is inserted firmly into the wall socket.
	The appliance is defective.	Switch off the appliance and unplug it. Go to the nearest KENT authorized service centre for assistance.
The appliance does not start when key is pressed.	There is a connection problem.	Check if the appliance is connected to the mains and if the plug is inserted firmly into the wall socket.
The appliance suddenly stops working while running.	The appliance has over-heated.	Let the appliance cool for 20 minutes before attempting to restart it.
	The appliance is over loaded.	Remove some ingredients, add some water and try again.
	The appliance is defective.	Switch off the appliance and unplug it. Go to the nearest KENT authorized service centre for assistance.
The appliance makes a lot of noise.	Jar is not place properly.	Reinstall the jar in correct position.
	Blades not working properly.	Reinstall the blades correctly. If problem persists, replace blades.
	Problem with blender’s inner drive broken.	Switch off the appliance and unplug it. Go to the nearest KENT authorized service centre for assistance.
Motor does not work properly.	Appliance is defective.	Switch off the appliance and unplug it. Go to the nearest KENT authorized service centre for assistance.
	Blades not installed properly.	Reinstall the blades correctly. If problem persists, replace blades.
Water leaking.	Loose screw in Jar bottom.	Tighten the screw.
	Jar broken.	Replace the jar.
	Blades worn off.	Replace the blades.



HOUSE of PURITY



8906019941124



Innovations for
Better Living

KENT RO SYSTEMS LTD.

4-B, Toy City, Ecotech III, Greater Noida (W), U.P. – 201306

Ph.: +91- 120 – 2397711

E-mail: sales@kent.co.in | website: www.kent.co.in.

For customer complaints, contact customer care officer at:

E-6, 7 & 8, Sector-59, Noida, UP-201 309, India. Call: 092-789-12345

E-mail: service@kent.co.in or Visit us at www.kent.co.in

Imported & Marketed by: KENT RO Systems Ltd.