

KENT Wizard Cyclonic Vacuum Cleaner

KENT
Cyclonic
Vacuum Cleaners
HOUSE of PURITY

Instruction Manual



September, 2018

KENT
Cyclonic
Vacuum Cleaners
HOUSE of PURITY



Imported & Marketed by:
KENT RO SYSTEMS LTD.
A-6, Sector-87, Noida-201306, U.P., India.

For customer complaints,
contact our Customer Care Officer at:
E-6, 7 & 8, Sector-59, Noida, U.P.-201 309, India.
Call: 92-789-12345
E-mail: service@kent.co.in or visit us at www.kent.co.in


CYCLONE5 Technology
Cleans with lower dust discharge
using foam filter

New Age Vacuum Cleaners
**Pure Cleaning
Healthy Living**



Welcome to KENT

Dear Customer,

At the outset, allow us to thank you for your trust in KENT Wizard Cyclonic Vacuum Cleaner. At KENT, we take pride in our reputation for product quality and industry proven performance. We are certain that your decision to own KENT Wizard Cyclonic Vacuum Cleaner will go a long way towards keeping you and your family in good health. We are confident that you will be more than satisfied with its performance and that it will serve your need for safer and cleaner living without any compromise.

This guide would help you in getting the best out of your KENT Wizard Cyclonic Vacuum Cleaner. Please go through the booklet to familiarise yourself with its operation and maintenance.

With this appliance, you can look forward to years of trouble-free service. To ensure that the warranty of your KENT Wizard Cyclonic Vacuum Cleaner is effective, it is important that you fill up the enclosed warranty card and mail it to us within 15 days of purchase.

In case you require any further information, please contact your nearest KENT dealer/branch.

Happy Cleaning,

KENT RO SYSTEMS LTD.

Table of Contents

1. Introduction	1
2. Features of KENT Wizard Cyclonic Vacuum Cleaner	1
3. Know your Product	1
4. Items in the Box	2
5. Assembling KENT Wizard Cyclonic Vacuum Cleaner	2
6. Using the Appliance	3
7. Use of Accessories	3
8. Important Instructions	4
9. Cleaning and Maintenance	4
10. Important Safety Instructions	6
11. Troubleshooting	7
12. Technical Specifications	7

Introduction

We at KENT have always believed that a clean and healthy life is a right of every individual. This ethos is what made us embark on this journey to develop innovative solutions for cleaning water, vegetable and air. With the use of an innovative technology and support by a competent service network, we have been able to create a brand which has become synonymous with well-being and health.

Continuing the tradition, we now present the KENT Wizard Cyclonic Vacuum Cleaner, with futuristic and state-of-the-art Cyclonic technology and foam filters to provide clean, dust-free and spotless surroundings.

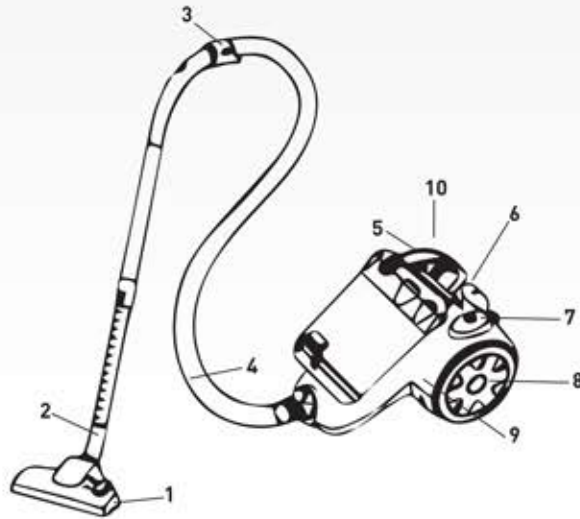
KENT Wizard Cyclonic Vacuum Cleaner does not use filtration bags, as found in traditional vacuum cleaners available in the market. Instead, air and dust are sucked at high speed creating a fast-spinning vortex and the dust is separated in a detachable cylindrical collection vessel or bin. The Cyclonic technology and foam filter in KENT Wizard Cyclonic Vacuum Cleaner also reduces air pollution with lower dust discharge.

Features of KENT Wizard Cyclonic Vacuum Cleaner

1. Advanced Cyclonic Technology (bagless) for dust collection.
2. High efficiency motor with strong suction force for efficient cleaning.
3. Auto power cord retractor.
4. Lightweight.
5. Compact and contemporary design.

Know Your Product

1. Turbo Brush
2. Metal Telescopic Tube
3. Handle
4. Flexible Hose
5. Carrying Handle
6. Power Cord
7. Cord Retractor Button
8. Wheel
9. Dust Cup
10. On/Off Button



Items in the Box

1. KENT Wizard Cyclonic Vacuum Cleaner: 01 No.
2. Flexible Hose : 01 No.
3. Aluminium Telescopic Tube : 01 No.
4. Floor & Carpet Brush : 01 No.
5. Widemouth Brush : 01 No.
6. Crevice Tool : 01 No.
7. Handle : 01 No.
8. User Guide : 01 No.

Assembling: KENT Wizard Cyclonic Vacuum Cleaner

1. Unpack the unit completely and remove any stickers that can prevent unit operation.
2. Check the unit for damages. Do not use it in case of any damages.
3. Before switching the unit on, make sure that your home's main voltage corresponds to the unit's operating voltage.

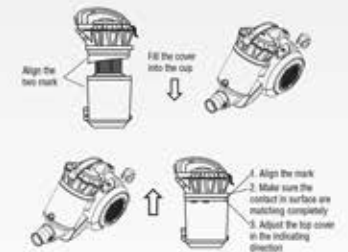
Attaching/Detaching Dust Container to Vacuum Cleaner's Body

a. Attaching

Place the bin on the motor unit as shown in the figure.

b. Detaching

To remove the bin, lift in the direction of arrow.



Attaching/Detaching of the Flexible Hose

a. Attaching

Insert flexible hose into the air intake duct on top of the appliance. Press until it settles with a click.

b. Detaching

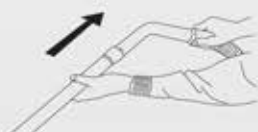
To remove the hose, unplug the appliance and gently pull the hose attached to the air intake duct.



Attaching/Detaching the Extension Tubes

a. Attaching

Attach the metal telescopic/extension tube to the handle in the direction of arrow as shown in the figure



b. Detaching

To detach the metal telescopic/extension tube from the handle, pull gently in the direction of the arrow as shown in the figure.

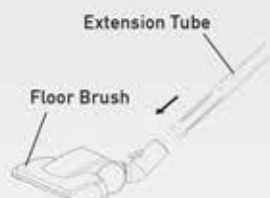
Attaching/Detaching of Floor Brush

a. Attaching

To use the turbo brush, attach the other end of the tube to the brush as shown in the figure.

b. Detaching

To detach the turbo brush, gently pull out.

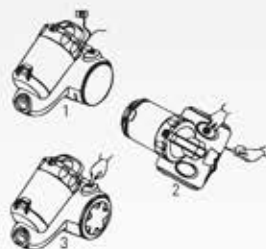


Note: Always remove the plug from the power socket before fitting or removing accessories.

Using the Appliance

Before using the appliance:

1. Unwind a sufficient length of cable and insert the plug into the power socket. A yellow mark on the power cable shows the ideal cable length. Don't pull the cable beyond the red mark.
2. Press the ON/OFF button to switch the appliance on.
3. To rewind the power cable, press the rewind button with one hand and guide the cable with the other hand to ensure that it does not whip, causing any injury or damage.



Use of Accessories

a. Crevice Tool

Ideal for cleaning of radiators, crevices, corners, baseboards and between cushions.



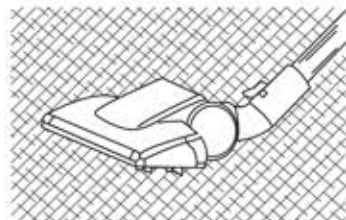
b. Small Brush

Used for cleaning furniture, venation, blinds, books, lamp shades, shelves, drapery rods, high shelves and corners.

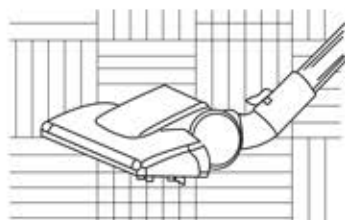


c. Floor & Carpet Brush

Ideal for daily cleaning of carpets and hard/wooden floors.



Carpet



Hard floor

Important Instructions

1. Do not operate the vacuum cleaner too close to heaters, radiators, cigarette butts, etc.
2. Do not plug in the device with wet hands.
3. Before using the vacuum cleaner, remove large or sharp objects from the floor in order to prevent damage of paper filter.
4. During unplugging, do not pull electrical cable. Pull out the plug itself.

Note: If the suction pipe or telescopic wand stick on pipe is blocked, switch off vacuum cleaner at once. Clear the blockage before attempting to start the vacuum cleaner again.



Cleaning and Maintenance

a. Emptying Dust Cup

1. Unplug the appliance.
2. Remove the flexible tube.
4. Take out the dust cup.
5. Press the lock of dust cup's lower cover.
6. Carry away the dust glass cap and throw away the contents.
7. Replace the dust compartment subassembly until it is locked.



b. Cleaning Filter

1. Filter for air inlet should be cleaned at least twice a year, or when it becomes visibly solid.
2. Clean foam filters whenever you find it filled.
3. Always operate the cleaner with filters and foam installed.
Not doing so would result in reduced suction or even motor damage.
4. Disconnect from the electrical outlet before cleaning the filter.
5. Do not use a washing machine to clean filter.
6. Do not use hair drier to dry it.

C. Storage

1. If you do not intend to use the appliance for a long time, store it carefully.
2. Unplug the appliance.
3. Keep the appliance out of the reach of children.

Important Safety Instructions

When using an electrical appliance, basic precaution should always be followed, including the following:

1. Do not leave the vacuum cleaner on when plugged in. Unplug when not in use and before servicing.
2. To reduce the risk of electric shock, do not use on wet surfaces.
3. Use the appliance only as described in the manual.
4. Always use manufacturer's recommended attachments only.
5. Do not use the appliance if cord or plug is damaged or worn out. Replace the damaged cord or plug immediately.
6. Do not try to service the appliance on your own. Send it to an authorised service centre.
7. Never use the cord as a handle, close door on the cord, or pull the cord around sharp edges or corners. Keep the cord away from heated surfaces.
8. Do not unplug the appliance by pulling the cord. Always unplug by pulling the plug and not the cord.
9. To avoid electric shocks, do not use the appliance with wet hands.
10. Keep hair, loose clothing, fingers and all parts of body away from moving parts.
11. Turn all controls off before unplugging.
12. Use extra precaution while cleaning stairs.
13. Do not use the appliance to pick any flammable or combustible liquids, such as gasoline, or use in areas where they may be present.
14. Hold plug when rewinding onto cord reel. Do not allow plug to whip when rewinding.
15. Unplug before connecting the hose.
16. Do not pick up anything that is burning or leaving smoke, such as cigarettes, matches or hot ashes.
17. Never use the appliance without filter in place.
18. If the supply cord is damaged, it must be replaced by the manufacturer or its service agent or a similarly qualified person in order to avoid a hazard.
19. This appliance is suitable for indoor use only.
20. Keep away from children.

Troubleshooting

Problem	Possible Cause	Possible Solutions
The appliance does not switch on.	<ol style="list-style-type: none"> 1. Power Cord is not firmly plugged into the socket. 2. No power in the main supply. 	<ol style="list-style-type: none"> 1. Plug in the unit firmly. 2. Check the fuse or cutout switch. Replace the fuse or reset the switch. 3. Call an authorised service centre.
The appliance has weak suction power.	<ol style="list-style-type: none"> 1. Filters are blocked. 	<ol style="list-style-type: none"> 1. Switch off the cleaner and disconnect the cleaner from the main power supply. 2. Remove the filters and clean them.
The hose or brush does not pickup any dust.	<ol style="list-style-type: none"> 1. Hose choked or some blockage on the brush. 	<ol style="list-style-type: none"> 1. Switch off the cleaner and disconnect the cleaner from the main power supply. 2. Remove the hose and/or brush and remove any blockage.

Technical Specifications

Product	KENT Wizard Cyclonic Vacuum Cleaner KSL-153
Product Code	16015
Net Weight	7.20kg
Input Power Supply	Single Phase 220 V AC, 50 Hz. <input type="checkbox"/>
Max. Vacuum Pressure	>24 kPa
Noise	<80 dB (A)
Airflow	26 L/s
Maximum Power	1200 W

Warranty Card

Product: KENT WIZARD CYCLONIC VACUUM CLEANER

Serial No.:..... **Dealer Stamp:**.....

Customer Details:

Customer's Name:.....

Customer's Address:

Customer's Phone No.:

Warranty Details:

Invoice Date:..... Invoice No.:



Imported and Marketed by:
KENT RO SYSTEMS LTD.

A-6, Sector-87, Noida-201306, U.P., India.
E-mail: service@kent.co.in | Website: www.kent.co.in
Customer Care: 92-789-12345

Terms & Conditions of Warranty

KENT warrants all new products manufactured by it to be free from defects in material and workmanship under normal usage and service from the date of purchase as under:

1. The Warranty period commences from the date of purchase by the first end-user. During this Warranty period of one year, KENT or its Authorized Service Provider (ASP) will replace or repair any part of KENT Vacuum Cleaner, that in the opinion of KENT or its ASP, would be defective in operation due to faulty material or workmanship (i.e. manufacturing defects) with the exception of consumables such as Filters.
2. The product's plastic body is not covered under Warranty and hence, it must be handled with care to guard against breakage.
3. The original purchaser of the unit can avail services under Warranty at the point of sale, by producing the damaged part(s) along with the original invoice.
4. This Warranty is void if the unit is not operated under normal conditions or according to the instructions given in the manual.
5. Product returned to KENT or its ASP for Warranty examination must be shipped freight prepaid.
6. KENT or its ASP shall not be held liable for claims exceeding the cost of repair of the defects in workmanship.
7. This Warranty Agreement shall not be interpreted to render KENT or its ASP liable for injuries or damages of any kind - direct, consequential or contingent to persons or property.
8. KENT or its ASP shall not be held responsible by representative or buyer for failure to abide by any of the obligations of this Warranty Agreement if such failures are the result of circumstances of Forces Majeures: such as, but not limited to, floods, earthquakes, transportation strikes, labour disputes with outside suppliers or any other conditions beyond the control of KENT or its ASP.
9. KENT or its ASP shall not be held liable for repair or alterations made without prior written approval; for products failures resulting from the lack of proper maintenance.
10. This Warranty Agreement excludes all products/component parts or damage to any part of this Vacuum Cleaner which, in the opinion of KENT or its ASP, have been subjected to misuse; misapplication; negligence; alteration; accident or operation contrary to our instructions, incompatibility with accessories not installed by KENT or its ASP, or that have been repaired with component parts other than those manufactured by or obtained from KENT or its ASP. Damage caused by freezing, flood, fire or Act of God is not covered by this Warranty. In all such cases regular charges will apply. This limited Warranty does not include service to diagnose a claimed malfunction in this unit.
11. KENT reserves the right to alter or improve design and specifications at any time, without any contingent obligations to prospective buyers or owners of the products previously sold.
12. Any disagreements and obligations based upon the purchase of KENT products and thereby imposed on KENT or its ASP shall be governed by and construed according to the laws of INDIA and subject to the jurisdiction of Delhi Courts only.
13. KENT or its ASP assumes no Warranty liability in connection with this Vacuum Cleaner other than that specified herein. This Warranty is in lieu of all other warranties, expressed or implied, including warranties of fitness for a particular purpose. KENT or its ASP does not authorize any person or representative to assume for them any other obligations on the sale of this Vacuum Cleaner.
14. Under no circumstances, the liability of KENT or its ASP shall exceed the value of the product.
15. Under no circumstances are the terms mentioned above negotiable and no employee of KENT or its ASP has the authority to supersede them.