

KENT
Smart Chef
Appliances
HOUSE of PURITY



Imported and Marketed by:
KENT RO SYSTEMS LTD.
E-6, 7 & 8, Sector-59, Noida, U.P.-201 309, India.
E-mail: sales@kent.co.in | Website: www.kent.co.in

For customer complaints,
contact our Customer Care Officer at:
E-6, 7 & 8, Sector-59, Noida, U.P.-201 309, India.
Call: 92-789-12345
E-mail: service@kent.co.in or visit us at www.kent.co.in

Made in People's Republic of China

KENT SMART

—| SLOW JUICER |—

LOW RPM RETAINS NUTRIENTS, FIBRE AND TASTE

KENT

Smart Chef

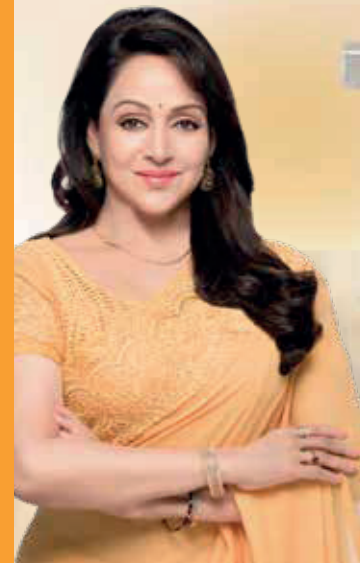
Appliances

HOUSE of PURITY

Instruction Manual



POWER **80W**
CAPACITY **100ML**



Welcome to KENT

Dear Customer,

Congratulations on your purchase and welcome to **KENT**.

At the outset, allow us to thank you for your trust in **KENT Smart Chef Appliances**.

At KENT, we take pride in our reputation for quality products and industry proven performance. We are certain that you will be more than satisfied with the performance of **KENT Smart Slow Juicer** and that it will serve you and your family's need without any compromise.

This guide will help you in getting the best out of your appliance. Please go through the booklet to familiarize yourself with its operation and maintenance.

With its robust quality, you can look forward to years of trouble-free service.

In case you require any further information, please contact your nearest **KENT** dealer / branch.

Bon Appetit!

KENT RO Systems Ltd.

Table of Contents

1.	Introduction	1
2.	Salient Features	1
3.	Safety Precautions	1
4.	Know Your Product	2
5.	Items in the Box	3
6.	Assembling Your KENT Smart Slow Juicer	3
7.	Using Your KENT Smart Slow Juicer	4
8.	Ingredients and Tips	4
9.	Cleaning & Maintenance	5
10.	Troubleshooting	5
11.	Technical Specifications	6

INTRODUCTION

Thank you for using our slow juicer. In order to correctly use and maintain this product, please read the instructions carefully and save this manual for future reference.

With **KENT's Smart Slow Juicer**, you can now drink your way to good health. It brings to you a healthy and tasty way to prepare refreshing juices in no time. Extract the best out of fruits and vegetables, ensuring maximum nutrients for your body.

With its specialized low speed squeezing technique, it lets you preserve the natural and original taste of the ingredients while retaining its essential nutrients. Its powerful motor has been designed in a way that each and every ingredient that you put in is given enough time to have its juice fully extracted, leaving behind the dry pulp and a delicious juice packed with nutrition. Its low speed prevents oxidation, allowing the nutrients from each fruit or vegetable to be retained, in turn leading to a better tasting and longer lasting juice.

SALIENT FEATURES

1. Low-speed squeezing in KENT Smart Slow Juicer ensures preservation of fibre, nutrients and original taste.
2. KENT Smart Slow Juicer has a reverse motor action to clear blockages.
3. KENT Smart Slow Juicer comes with a unique juice outflow passage, allowing juice to flow quickly and effortlessly.
4. With the use of low-speed squeezing technique coupled with a synchronous motor, KENT Smart Slow Juicer removes the need of pushing the ingredients.
5. Easy to assemble and disassemble with components that are also easy to clean.
6. The body material is made of food grade plastic.
7. Independent discharge of juice and pomace.
8. Comes with pulp outlet cup for use and convenience.
9. Light and easy to store.
10. Convenient lid lock design to prepare different flavours.
11. Its powerful motor has been designed in a way that each and every ingredient that you put in is given enough time to have its juice fully extracted, leaving behind the dry pulp and a delicious juice packed with nutrition.
12. Its low speed prevents oxidation, allowing the nutrients from each fruit or vegetable to be retained, in turn leading to a better tasting and longer lasting juice.

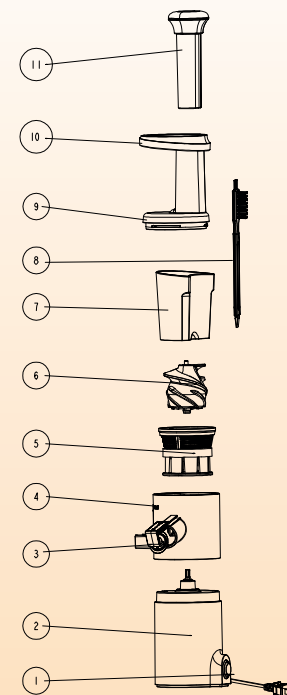
SAFETY PRECAUTIONS

1. Be sure to disconnect the power supply before disassembling, installing or adjusting any part of the product.
2. Before use, please check whether the power cord, plug, filter, screw and other parts are damaged or not. If any damage is found, please stop using the product and contact our customer service department, do not disassemble by yourself, so as to avoid danger.
3. Before switching on the power supply, please make sure that the detachable parts are installed in place, and the container lid and container must be fully tightened to avoid leakage of juice, container lid falling off and other abnormalities during product operation.
4. The product is equipped with intelligent protection components. In the process of using the product, the automatic protection will stop working due to excessive power. If you need to continue using the product, please wait for 10 minutes before restarting.

5. During working, if there is overload or blocked turn, it will automatically stop. It is recommended to clean up the ingredients in the feeding tube after reversing and then continue to use.
6. The ingredients should be cut into small pieces, which can be fit into the feeding tube. Remove seeds, hard seeds, thick skins or hard shells before processing.
7. This product is not suitable for squeezing hard and fibrous ingredients, such as ice cube, coconut, sugar cane, etc. Squeezing such ingredients is easy to get stuck and block slag, which will lead to damage of parts and thus affect the product life.
8. When adding ingredients, do not push the ingredients too much, so that the ingredients can be just cut off.
9. To avoid injury, do not put your hand into the feeding tube during operation. To prevent damage from contact with the screw parts, do not use any object other than the pusher to push the food material in.
10. After squeezing some food materials, accessories such as filter components, screws and container lid may be dyed, which is the normal phenomenon. Dyeing does not affect eating and does not damage health.
11. Do not put the main body into water or other liquid, nor wash it under water or other liquid.
12. To be kept out of reach of children.
13. Do not put any parts of the product into the dishwasher.
14. Do not heat any of the product accessories.

KNOW YOUR PRODUCT

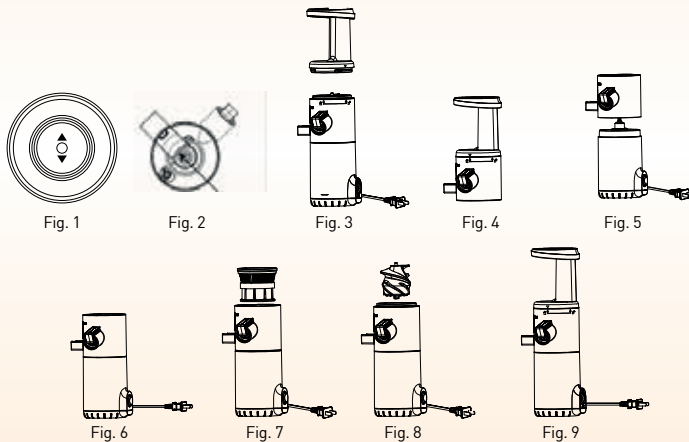
1. Switch
2. Main body
3. Juice outlet components
4. Juicing cup
5. Filter
6. Screw
7. Pulp outlet cup
8. Brush
9. Cup lid
10. Tray
11. Pusher



ITEMS IN THE BOX

1. KENT Smart Slow Juicer	:	1 N
2. Pusher	:	1 N
3. Tray	:	1 N
4. Brush	:	1 N
5. Pulp Outlet Cup	:	1 N
6. Plastic Jar with Lid	:	1 N
7. Screw	:	1 N
8. Filter	:	1 N
9. Juicing Cup	:	1 N
10. User Manual	:	1 N

ASSEMBLING YOUR KENT SMART SLOW JUICER

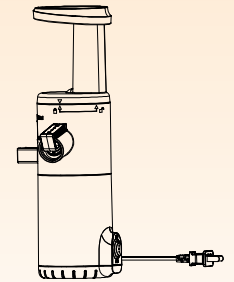


1. Wash every detachable component before installing.
2. Before installing the cup, make sure the sealing plug of dreg (pulp) hole is properly installed. If not, it may result in outflow of juice and uneven discharge of dreg (pulp).
3. Insert the sealing plug into the rectangular slot (refer figure 1) of the cup and plug in tightly (refer figure 2). Make sure the sealing ring of the cup is properly installed as shown in figure (refer figure 3).
4. Put the cup on the motor unit (refer figure 4) and rotate it clockwise till you hear a click (refer figure 5).
5. Put the filter screen on the cup and install it properly (refer figure number 6).
6. Put the squeezer components into the cup and rotate it properly (refer figure 7).
7. Insert the cup lid and then rotate it gently till you hear a click (refer figure 8 & 9).
8. Make sure the cup lid and the cup are properly locked.
9. Put impeller in the cup lid, juice container under the juice outlet and pulp container under the pulp outlet.
10. Connect the KENT Smart Slow Juicer to main power supply.
11. Your KENT Smart Slow Juicer is now ready for use.

USING YOUR KENT SMART SLOW JUICER

KENT Smart Slow Juicer can only be used when all the parts are correctly installed and when the cup and cup lid are properly locked (refer assembling your KENT Smart Slow Juicer section).

1. Wash fruits or vegetables and chop them into pieces that can fit into the feed tube.
2. Ensure that the juice container is correctly placed under the juice outlet and the pulp container under the pulp outlet.
3. Switch on the power, press the power button and then press "Start Forward" button.
4. Add the chopped pieces in the feed tube. Use the food pusher to press them gently.



Note:

1. Do not push the impeller forcefully. Doing so might effect the quality of the juice and the juicer might stop working.
2. Never insert your fingers or any other object into the feed tube.

After you have processed all ingredients and the juice stops flowing out, put sealing rings on the outlet and switch off the appliance. Wash the components after the machine completely stops rotating.

INGREDIENTS & TIPS

1. Use fresh fruits and vegetables. They contain more juice, especially suitable ingredients are: apples, pears, grapes, melons (watermelon, cantaloupe, muskmelon...), celery sticks, beetroot, carrots, spinach, etc.
2. Thick skins such as cantaloupe and beetroot need to be cut off. The seeds of citrus fruit will make the juice bitter, it is recommended to remove.
3. The amount and taste of the juice depends on the freshness and type of the selected fruits.
4. Freshly squeezed apple juice will quickly turn brown, which is normal oxidation.
5. Leaves and stalks (such as celery, lettuce) can be juiced in the juicer.
6. Fruity and soft ingredients, such as strawberries, tomatoes, pineapples, kiwis, oranges, etc., have less juice amount. It is recommended to squeeze juice with harder and juicy ingredients. You should squeeze softer ingredients first, then squeeze harder ingredients.
7. Foods with more fibre, such as sugar cane, are not suitable for juice extraction with this product.
8. Starch-containing ingredients such as bananas, papayas, avocados, figs, and mangoes are not suitable for juicing with this juicer. You can use slice and shred functions to process such fruits.

Cleaning & Maintenance

1. Turn off the switch and disconnect the power before cleaning.
2. Clean the machine immediately after use.
3. Do not wash or soak the main body in water or other liquids. The outside of the main body can be wiped with a damp cloth.
4. It should be kept in a dry place to avoid direct sunlight.
5. Make sure the machine is clean and dry before storing it.
6. To disassemble, please follow the assembly method in reverse order.

TROUBLE SHOOTING

FAILURE DESCRIPTION	POSSIBLE CAUSE	POSSIBLE SOLUTION
After starting the switch, the product does not work	<ol style="list-style-type: none">1. Check the power cord and confirm it is inserted.2. The cup body is not in place with the host, and the reset switch is not switched on.3. The ingredients are too hard and due to power protection, the machine stops working.	<ol style="list-style-type: none">1. Insert the power cord correctly.2. Place the cup body properly and connect the host in place.3. Replace or cut the ingredients into small pieces before using
The motor emits a smell during the first few uses	This is common for a new motor.	If the smell persists, send the machine to our maintenance point for repairs.
The machine stops working during juicing.	<ol style="list-style-type: none">1. The plug is loose2. Too many ingredients in the feeding tube, causing overload or blockage.3. The blocking silicone plug is not installed.	<ol style="list-style-type: none">1. Insert the power cord correctly.2. Reduce the amount of ingredients added and do not push the pusher too hard3. Insert the blocking silicone plug correctly.
The juice contains too much fruit pulp.	Juice filter is damaged	Replace juice filter with a new one.

TECHNICAL SPECIFICATIONS

Product Name	SMART Slow Juicer
Product Code	116094
Rated voltage	220-240V
Rated frequency	50HZ
Rated power	80W
Continuous working time	≤10 minutes
Interval time	≥10minutes