

KENT
Health Care
PRODUCTS
HOUSE of PURITY



Marketed by:
KENT RO SYSTEMS LTD.
E-6, 7 & 8, Sector-59, Noida, U.P.-201 309, India.
E-mail: sales@kent.co.in | Website: www.kent.co.in

Manufactured by:
KENT RO SYSTEMS LTD.
1. Khasra No. 93, Village-Bantakhedi, Tehsil-Roorkee,
District-Haridwar, Uttarakhand - 247 668, India.
2. A-6, Sector-87, Noida-201 305, U.P., India.
3. A-7, Sector-87, Noida-201 305, U.P., India.

For customer complaints, contact Customer Care Officer at:
E-6, 7 & 8, Sector-59, Noida, UP-201 309, India. Call: 92-789-12345
E-mail: service@kent.co.in or visit us at www.kent.co.in

KENT
Health Care
PRODUCTS
HOUSE of PURITY

KENT Auto Sanitiser-6

Ideal for
Factories, Offices, Banks, ATMs, Railways
Hospitals, Malls, Shops & Homes, etc.

INSTRUCTION MANUAL



Welcome to KENT

Dear Customer,

At the outset, allow us to thank you for your trust in **KENT**. We take pride in our reputation for product quality and industry proven performance. We are certain that your decision to own a **KENT Auto Sanitiser-6** will go a long way towards keeping you and your employees in good hygiene & health. We are confident that you will be satisfied with its performance and that it will serve your need for safer premises without any compromise on hygiene and cleanliness.

This guide will help you in getting the best out of your **KENT Auto Sanitiser-6**. Please go through this booklet to familiarize yourself with its operation and maintenance.

You can look forward to years of trouble-free service. To ensure that the warranty of your Auto Sanitiser is effective, In case you need any further information, contact your nearest **KENT** dealer or branch.

Best Wishes,

KENT RO SYSTEMS LTD.

TABLE OF CONTENTS

1. KENT Auto Sanitiser-6	1
2. Features	1
3. Items in the Box	1
4. Installation Instructions	1
5. Starting-up the Sanitiser	2
6. How it Works	2
7. Priming of the Pump	2
8. Cleaning & Maintainance	3
9. Important Safety Instructions	4
10. Technical Specifications	4

KENT AUTO SANITISER-6

KENT Proudly presents KENT Auto Sanitiser-6, will go a long way towards keeping you and your employees in good hygiene & health. We are confident that you will be satisfied with its performance and that it will serve your need for safer premises without any compromise on hygiene and cleanliness.

FEATURES

- Transparent tank for sanitiser
- High Storage Capacity of 6L
- Removable tank for cleaning and easy refilling
- Fully automatic and Touchless use for hands free operation
- Optimal and Powerful Spray
- Light on the hand along with the spray to display dispensing
- Bulk Sanitiser are economical in longer run

ITEMS IN THE BOX

- | | | |
|-----------------------------|---|------|
| 1. KENT Auto Sanitiser-6 | : | 1 N |
| 2. Screws & Plastic Inserts | : | 2 N |
| 3. Sticker Center Drill | : | 1 N. |
| 4. Syringe (50 ml) | : | 1 N |
| 5. Warranty Card | : | 1 N |

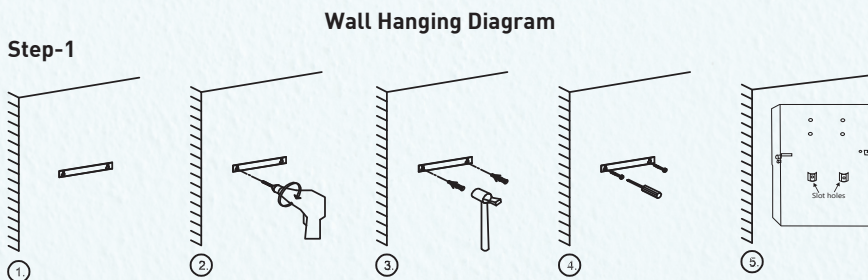
INSTALLATION INSTRUCTIONS

KENT Auto Sanitiser-6 is designed to facilitate only wall-mounting usage. The sanitiser is easy and convenient to install.

Recommended Site Preparations:

- Single Phase 230 V AC
- Installation space as per dimensions of the sanitiser
- Make sure that the sanitiser is mounted on a wall. Avoid installation on wooden and metallic stands
- The system and installation must comply with state and local laws and regulations

Installation Procedure:



1. Paste the central drill sticker on wall at (4.5 feet to 5.0 feet from the ground) as per your convenience.
2. Ensure that sticker is pasted straight on the wall, then drill holes as per the space provided on sticker.
3. Now, insert the puff up with the help of a hammer.
4. Screw in two 10X50 self-taping screws, 5.57 inches (141.5 mm) apart horizontally.
5. Carefully hang the purifier on the wall with the help of the wall-mounting slot holes provided on back side of the sanitiser.

Note: If the wall is not straight or the screws are not properly drilled in an even position, it will damage your sanitiser.

Note: Keep the device away from heat.

Step-2

1. Connect the power supply.
2. Installation is complete.

STARTING-UP THE SANITISER

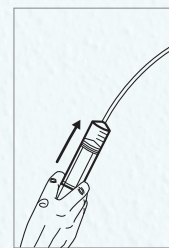
- Switch on the power supply
- Fill storage tank to the maximum level
- Before using for the first time run the machine until the liquid sanitiser comes out from the bottom so that pump will be primed (See priming procedure)
- Sanitiser is ready to use

HOW IT WORKS

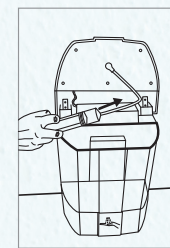
- Place your hand below the bottom of the dispenser at the middle
- Required (to be adjusted by technician only) quantity of the sanitiser gets sprayed
- Dispenser become ready for the next person after 3 seconds

PRIMING OF THE PUMP

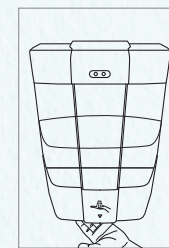
During installation as the pump will be used first time, priming needs to be done to remove the air in the line so that pump can operate.



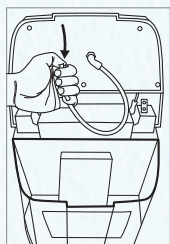
Open the top cover & by using syringe inject sanitiser into the sanitiser suction pipe, during this keep the sensor ON by keeping hand in front of it.



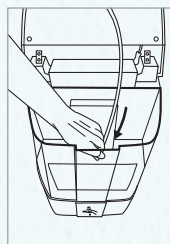
Fill it till the sanitiser can be pushed in.



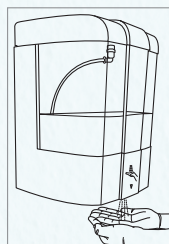
Keep pushing syringe filled with sanitiser till spray starts coming.



Now block the suction pipe with thumb so that the sanitiser inside does not fall and put it in the tank.



Now place hand in front of centre till proper spray starts to come. At this point all the air from the system has been removed.

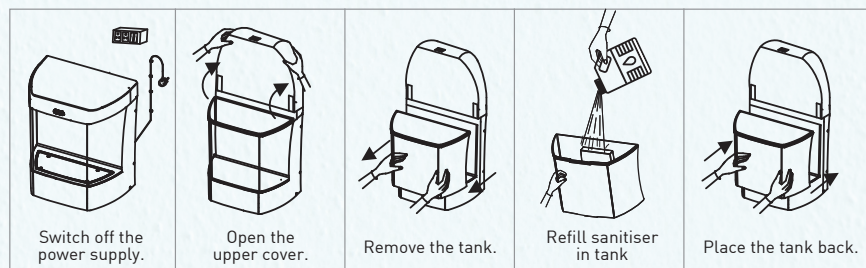


Machine is now ready for use.

Note: Above shown images are for reference only.

CLEANING & MAINTENANCE

- Removable tank for refilling and cleaning
- Sanitiser Refill- open the cover to take the tank out. Fill the sanitiser and put the tank back



Note: In case spray nozzle that blocked. Please contact your nearest KENT dealer or branch, Mishandling of the same may lead to discontinue warranty.

IMPORTANT SAFETY INSTRUCTIONS

- If the supply cord is damaged, it must be replaced by the original part in order to avoid hazard
- Children should be supervised to ensure that they do not play with the appliance
- This appliance is not intended for use by persons (including children) with reduced physical, sensory or mental capabilities, or lack of experience and knowledge, unless they have been given supervision or instruction concerning use of the appliance by a person responsible for their safety

TECHNICAL SPECIFICATIONS

Product	: KENT AUTO SANITISER-6
Product Code	: 112012
Product Generic Name	: Hand Sanitiser
Product Colour	: White
Mounting	: Wall-mounting
Electrical Input	: 230 V AC
Capacity of Sanitizer	: 6 L
Dispensing Qty.	: Adjustable amount (1-1.5 ml)
Working Voltage	: 24V DC
Auto Sensing Distance (range required)	: 200mm to 250 mm
Sensing Time	: 200mS Typical Between sensing 3 seconds gap is required
Sensor Type	: Infrared Sensor
Hands to be used (Single or multi)	: Will work with both options
Net Weight	: 5.50 kg
Product Dimensions (mm)	: 390 (L) X 285 (W) X 440 (H)
Total Power Consumption	: 40W