

# COLD PRESSED JUICER+

Low Speed Helps Retain Nutrients

KENT

Smart Chef

Appliances

HOUSE of PURITY

## Instruction Manual





# Welcome to KENT

Dear Customer,

Congratulations on your purchase and welcome to **KENT**.

At the outset, allow us to thank you for your trust in **KENT Smart Chef Appliances**.

At KENT, we take pride in our reputation for quality products and industry proven performance. We are certain that you will be more than satisfied with the performance of **KENT Cold Pressed Juicer+** and that it will serve you and your family's need without any compromise.

This guide would help you in getting the best out of your appliance. Please go through the booklet to familiarize yourself with its operation and maintenance.

With its robust quality, you can look forward to years of trouble-free service.

To ensure that the warranty of your appliance is effective, it is important that you fill up the enclosed warranty card and mail it to us within 15 days of purchase.

In case you require any further information, please contact your nearest **KENT** dealer / branch.

Bon Appetit!

**KENT RO Systems Ltd.**



# Table of Contents

1.	Introduction	1
2.	Advantages of KENT Cold Pressed Juicer+	1
3.	Features of KENT Cold Pressed Juicer+	1
4.	Know Your Product	2
5.	Items in the Box	2
6.	Assembling Your KENT Cold Pressed Juicer+	3
7.	Using Your KENT Cold Pressed Juicer+	3
8.	Ingredients and Tips	4
9.	Content of Fruits & Vegetables	5
10.	Precautions	6
11.	Cleaning & Maintenance	6
12.	Disassembling Your KENT Cold Pressed Juicer+	7
13.	Important Safety Instructions	8
14.	Troubleshooting	9
15.	Technical Specifications	10



## INTRODUCTION

We, at KENT, have always believed that a clean and healthy life is the right of every individual. This ethos is what made us embark on the journey to develop innovative solutions for purifying the water that we drink, the vegetables and fruits that we eat, the homes that we live in and the air that we breathe.

Use of innovative technology and the support of a competent service network, have enabled us to create a brand which has become synonymous to well-being. Continuing with the tradition, we now present the **KENT Cold Pressed Juicer+** with state-of-the-art technology to provide you and your family a healthy life.

KENT Cold Pressed Juicer+ employs a low speed squeezing technique, which not only retains the natural and original taste, but also retains nutrients which are naturally found in the ingredients, making the juice healthy and tasty.

## ADVANTAGES OF KENT COLD PRESSED JUICER+ OVER CONVENTIONAL JUICERS

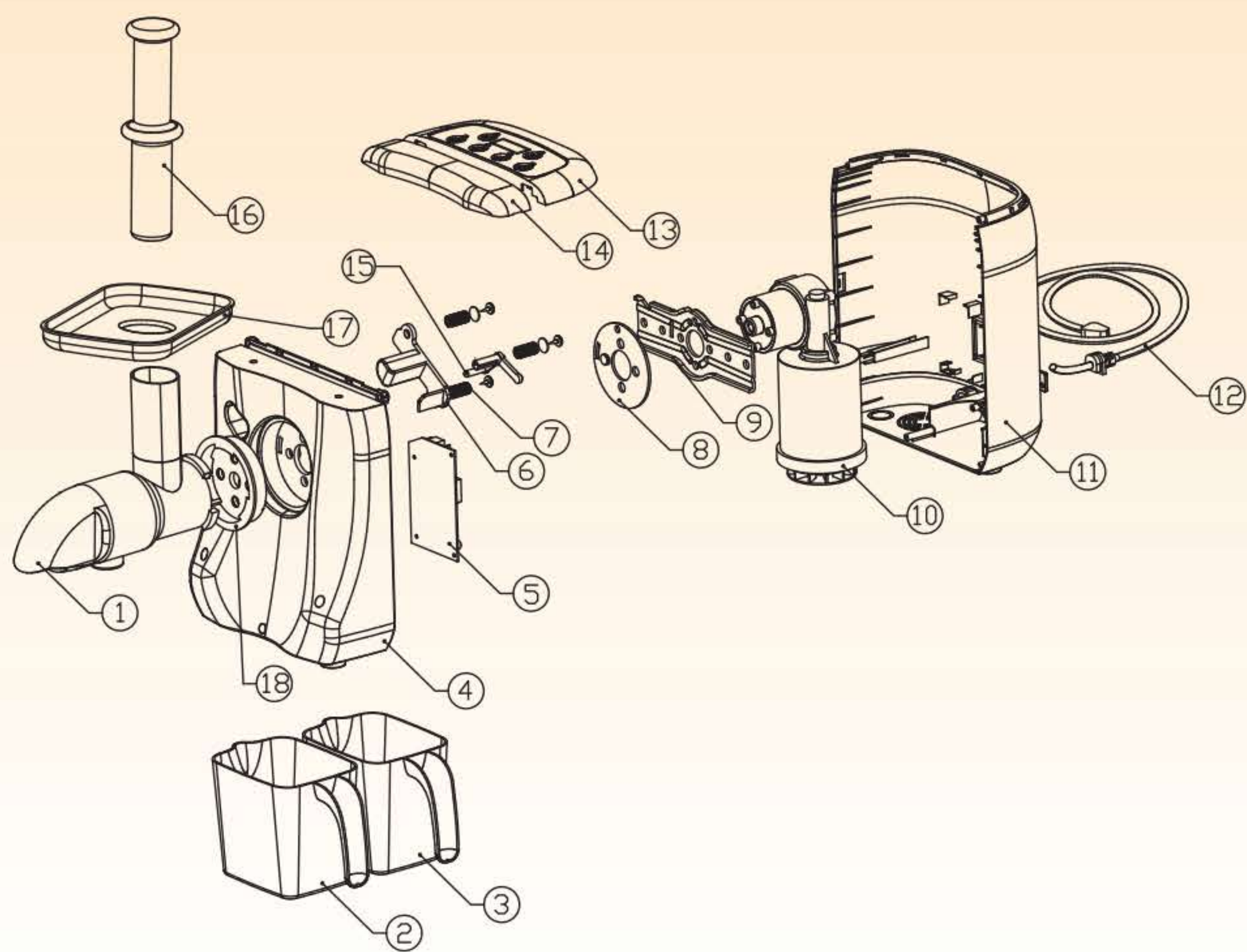
1. In a conventional juicer, the nutrients and fiber get oxidized, owing to the heat generated from high speed spinning. On the other hand, KENT Cold Pressed Juicer+ does not produce as much heat as generated by the conventional juicer, thus keeping the nutrients and fiber intact.
2. For the same quantity of vegetables or fruits, KENT Cold Pressed Juicer+ gives higher juice yield than conventional juicers. It can also process nuts for the yummiest almond or cashew nut milk shake, which is not possible with conventional juicers.
3. The lower processing speed gives KENT Cold Pressed Juicer+ a distinctive advantage of low noise, making it quieter than conventional juicers. With KENT Cold Pressed Juicer+, one can enjoy their favorite television serials while extracting juice.
4. KENT Cold Pressed Juicer+ comes with a powerful motor resulting in faster juice extraction and a smoother outflow. These features cannot be matched by the conventional juicers available in the market.

## FEATURES OF KENT COLD PRESSED JUICER+

1. World's 1<sup>st</sup> horizontal model for easy cleaning
2. Low-speed squeezing in KENT Cold Pressed Juicer+ ensures preservation of fibre, nutrients and original taste.
3. KENT Cold Pressed Juicer+ has a reverse motor action to clear blockages.
4. KENT Cold Pressed Juicer+ comes with a unique juice outflow passage, allowing juice to flow quickly and effortlessly.
5. The body material is made of food grade plastic.
6. Easy to assemble and disassemble the appliance components also easy to clean.



# KNOW YOUR PRODUCT-KENT COLD PRESSED JUICER+



- |                             |                         |                       |
|-----------------------------|-------------------------|-----------------------|
| 1. Juice Extractor Assembly | 7. Spring               | 13. Cover Touch Panel |
| 2. Juice Container          | 8. Silicon Washer       | 14. Front Top Cover   |
| 3. Pulp Container           | 9. Bracket Holder Plate | 15. Link For Switch   |
| 4. Front Cover              | 10. DC Motor            | 16. Pusher            |
| 5. PCB Power Supply         | 11. Back Cover          | 17. Food Tray         |
| 6. Lock Front Cover         | 12. Power Cord          | 18. Support Plate     |

## ITEMS IN THE BOX

- |                              |   |        |
|------------------------------|---|--------|
| 1. KENT Cold Pressed Juicer+ | : | 01 No. |
| 2. User Manual               | : | 01 No. |
| 3. Mixer Head                | : | 01 No. |
| 4. Transparent Cage          | : | 01 No. |
| 5. Cover                     | : | 01 No. |
| 6. Strainer                  | : | 01 No. |
| 7. Food Pusher               | : | 01 No. |
| 8. Plastic Food Tray         | : | 01 No. |
| 9. Juice Container           | : | 01 No. |
| 10. Pulp Container           | : | 01 No. |



# ASSEMBLING YOUR KENT COLD PRESSED JUICER+



Fig. 1

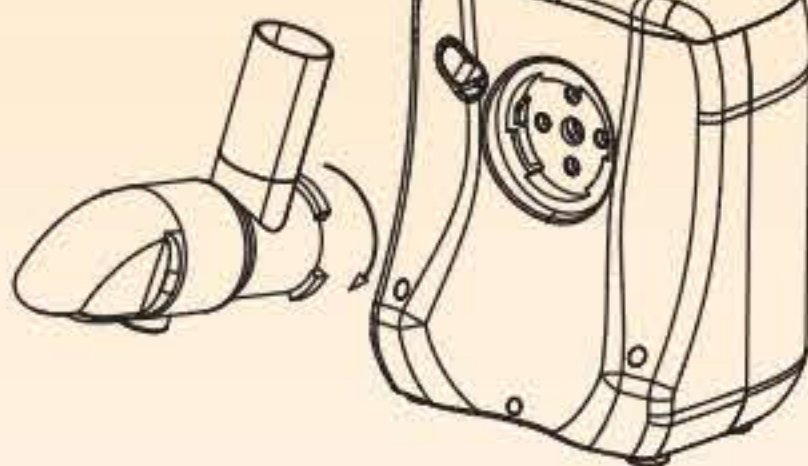


Fig. 2

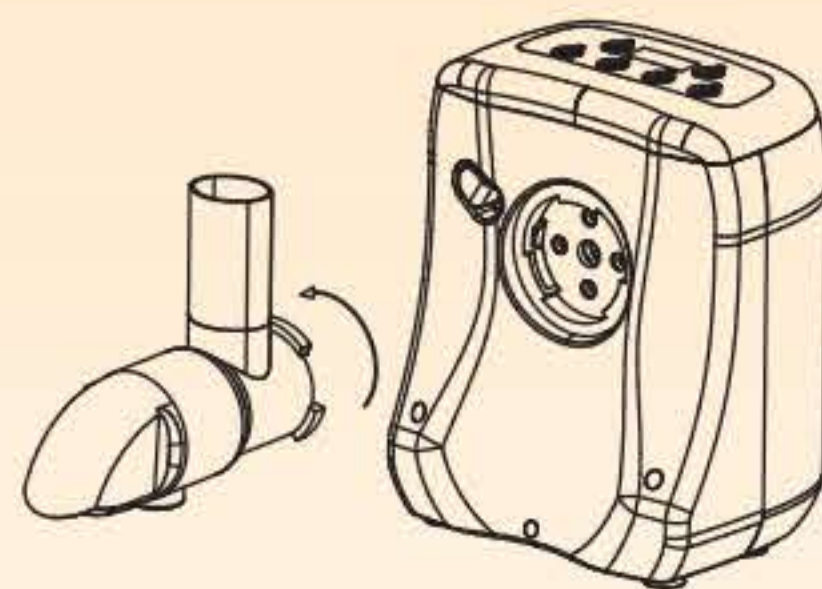


Fig. 3

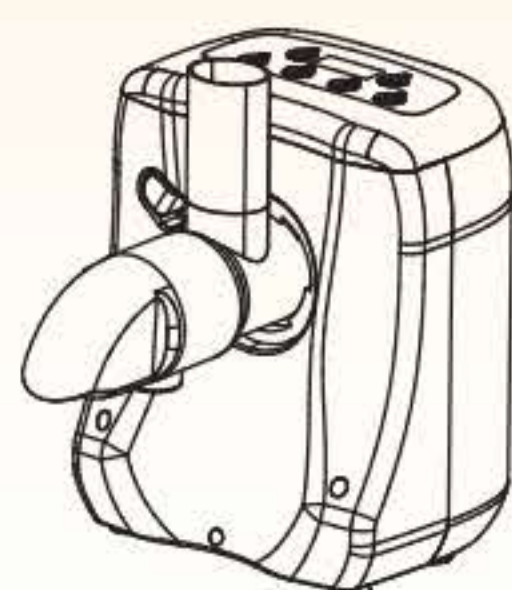


Fig. 4

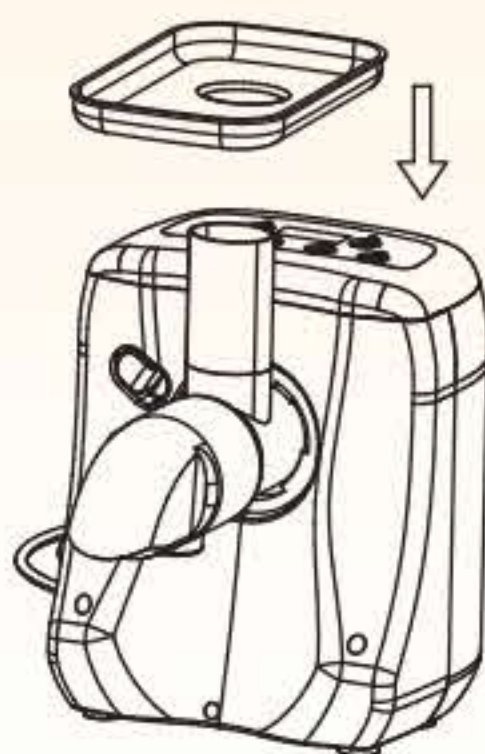


Fig. 5



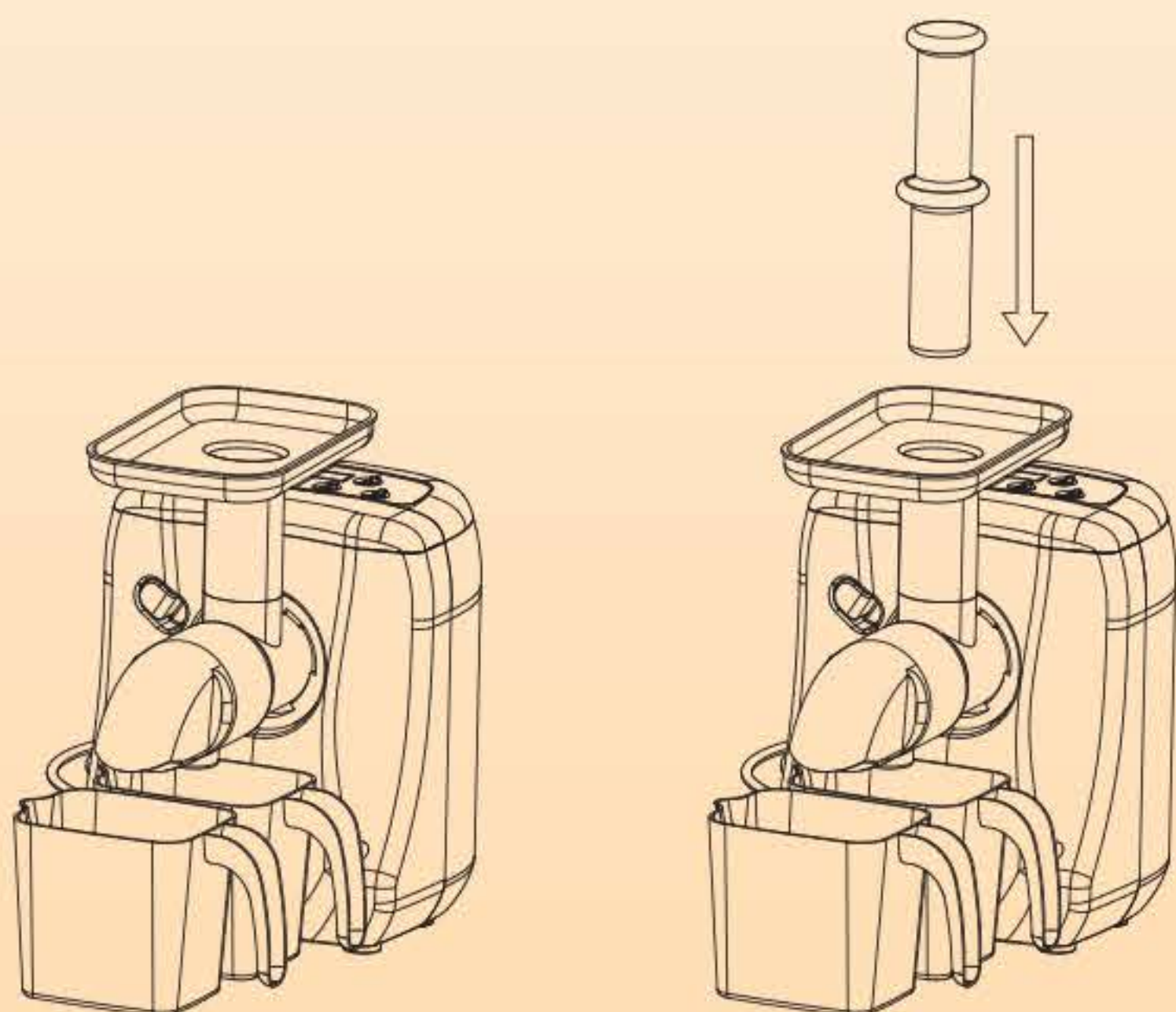
Fig. 6

1. Wash every detachable component before installing.
2. Insert the juice extractor assembly into the motor unit by tilting it at an angle of about 30 degree to the right side (refer fig 2). Lock the extractor inside the motor unit by rotating it in anti-clockwise direction till you hear a click (Refer fig. 3).
3. Insert the food tray into the juice extractor assembly (refer Fig. 5).
4. Put the pusher into the juice extractor assembly. Place the juice container under the juice outlet, and pulp the container under the pulp outlet (refer fig. 6).
5. Connect the KENT Cold Pressed Juicer+ to main power supply.
6. Now your KENT Cold Pressed Juicer+ is ready for use.

# USING YOUR KENT COLD PRESSED JUICER+

KENT Cold Pressed Juicer+ can only be used when all the parts are correctly installed and when the cup and cup lid are properly locked (refer assembling your KENT Cold Pressed Juicer+ section).

1. Wash fruits or vegetables and chop them into pieces that can fit into the feed tube.
2. Ensure that the juice container is correctly placed under the juice outlet and the pulp container under the pulp outlet.
3. Switch on the power, press the power button and then press “Start Forward” button.
4. Add the chopped pieces in the feed tube. Use the food pusher to press them gently.





**Note:**

1. The juicer is preset for 5 minutes of continuous operation in the forward direction after which it stops. To restart press “Start Forward” button again. Similarly if reverse button is pressed, the juicer stops after 15 seconds.
2. If in running condition you want to stop the operation, press the ‘Stop’ button.
3. Do not push the food pusher forcefully. Doing so might affect the quality of the juice and the juicer may stop working.
4. Never insert your fingers or any other hard object into the feed tube.

After you have processed all ingredients, wash the components after the machine completely stops rotating.

## INGREDIENTS & TIPS

1. Use fresh fruits and vegetables, as they contain more juice. Particularly suitable for processing in the juicer are pineapples, beetroots, apples, cucumbers, carrots, melons, pomegranate, tangerine, grapes, oranges or muskmelons.
2. You do not have to remove thin peels or skins. Only remove thick peels, e.g. pineapples, beetroots, water-melons, tangerine and sugar beet.
3. Fruits that contain starch, such as bananas, papayas, figs and mangoes are not suitable for processing in the KENT Cold Pressed Juicer+. Use a food processor, blender or bar blender to process them.
4. KENT Cold Pressed Juicer+ is not ideal for fruits or vegetables that are very hard, rich in fibre, or have starch content, e.g. sugarcane, etc.
5. Drink the juice immediately after you have extracted it. If it is exposed to air for some time, the juice will lose its taste and nutritional value.

**Optional Purchase:** A KENT Vacuum Bottle can be purchased separately to keep the juice fresh for a longer time

**Benefits of KENT Vacuum Bottle:** Juices when exposed to air get oxidized, leading to loss of minerals and fibre. The vacuum lid prevents oxidation and keeps the juices fresh for a longer time. To create a vacuum you need to pull the top lever 10 times. This creates a vacuum up to 70 kpa. The content in the bottle will not get oxidised & the original properties & taste of juices and smoothies will be maintained. You can store the juice for 2 days in a refrigerator and enjoy the chilled fresh juice.

**Warning:** The machine may stop working due to overload. In that case, press Stop button and then press reverse button to make the spiral mixer rotate in reverse direction. This results in the ingredients between the strainer and the mixer to move backward, freeing the mixer. After 15 seconds, the juicer will stop automatically or you can press the stop button. To continue with the juice extraction again press ‘Start Forward’ button (If the appliance still does not work, repeat the process two to three times).



# CONTENTS OF FRUITS & VEGETABLES

Fruit/ Vegetable	Vitamin/ Mineral Substance	Kilocalorie/Calorie
Apple	Vitamin C	200 g = 150 KJ (72 cal.)
Apricot	Dietary Fibre and Potassium	30 g = 85 KJ (20 cal.)
Sugar Beet	Folic Acid and Dietary Fibre	160 g = 190 KJ (45 cal.)
Blueberry	Vitamin C	125 g = 295 KJ (70 cal.)
Carrot	Vitamin A, B, C and Dietary Fibre	120 g = 125 KJ (30 cal.)
Celery	Vitamin C and Potassium	80 g = 55 KJ (7 cal.)
Cucumber	Vitamin C	280 g = 120 KJ (29 cal.)
Fennel	Vitamin C and Dietary Fibre	300 g = 145 KJ (35 cal.)
Grape	Vitamin C and Potassium	125 g = 355 KJ (85 cal.)
Kiwi Fruit	Vitamin C and Potassium	100 g = 100 KJ (40 cal.)
Nectarine	Vitamin C, Potassium and Dietary Fibre	180 g = 355 KJ (85 cal.)
Peach	Vitamin C, Potassium and Dietary Fibre	150 g = 205 KJ (49 cal.)
Pear	Dietary Fibre	150 g = 205 KJ (60 cal.)
Pineapple	Vitamin C	150 g = 250 KJ (59 cal.)
Strawberry	Vitamin C, Iron, Potassium and Magnesium	125 g = 130 KJ (31 cal.)
Tomato	Vitamin C, Dietary Fibre, Vitamin E, Folic Acid and Vitamin A	100 g = 90 KJ (22 cal.)



## PRECAUTIONS

1. Do not disassemble, repair or alter the appliance on your own. It may cause appliance failure or breakdown.
2. The input voltage must not exceed the rating as it might damage the appliance.
3. Unplug before replacing the filter screen/cleaning/moving the appliance.
4. Do not use the appliance with a damaged power cord or plug.
5. If the power cord is damaged, replace it with a genuine KENT spare.
6. If the appliance is not to be used for a long period, unplug it.
7. This product is for domestic use only.
8. Do not use this product when there is damage to the power cord, plug or other accessories and components.
9. Do not allow children to use this product without supervision.
10. Do not use any accessory or component provided by other manufacturers without proper recommendation. This will jeopardize the validity of your warranty.
11. Check the strainer and spiral mixer components before using the product. Do not use in case of any crack or damage.
12. Check if all the components are properly assembled before turning on the power switch.
13. Do not use the KENT Cold Pressed Juicer+ until the juice extract assembly is properly locked and a “click” is heard.
14. Do not open the juice extract assembly unless the power is turned off and the filter screen components have stopped working.
15. Do not immerse the motor unit in water or any other liquid. Do not wash, just wipe to clean (it has electrical components inside).
16. Do not allow the appliance to be dropped from a high level, doing so may damage the unit.
17. Do not use the appliance on tables that are unstable or have poor heat resistance, doing so may burn their surface.
18. It is strictly prohibited to wash the appliance with chemicals or volatile substances, doing so may cause color change, color fading and even fire.
19. In case of damage to the power cord, it must be replaced by the manufacturer or the service department only.

## CLEANING & MAINTENANCE

- The appliance is easier to clean if you do so immediately after use
- Do not use abrasive cleaning agents, scourers, acetone, alcohol, etc.
- Do not clean any of the parts in a dishwasher
- All the parts that can be disassembled can be washed

### Cleaning Steps

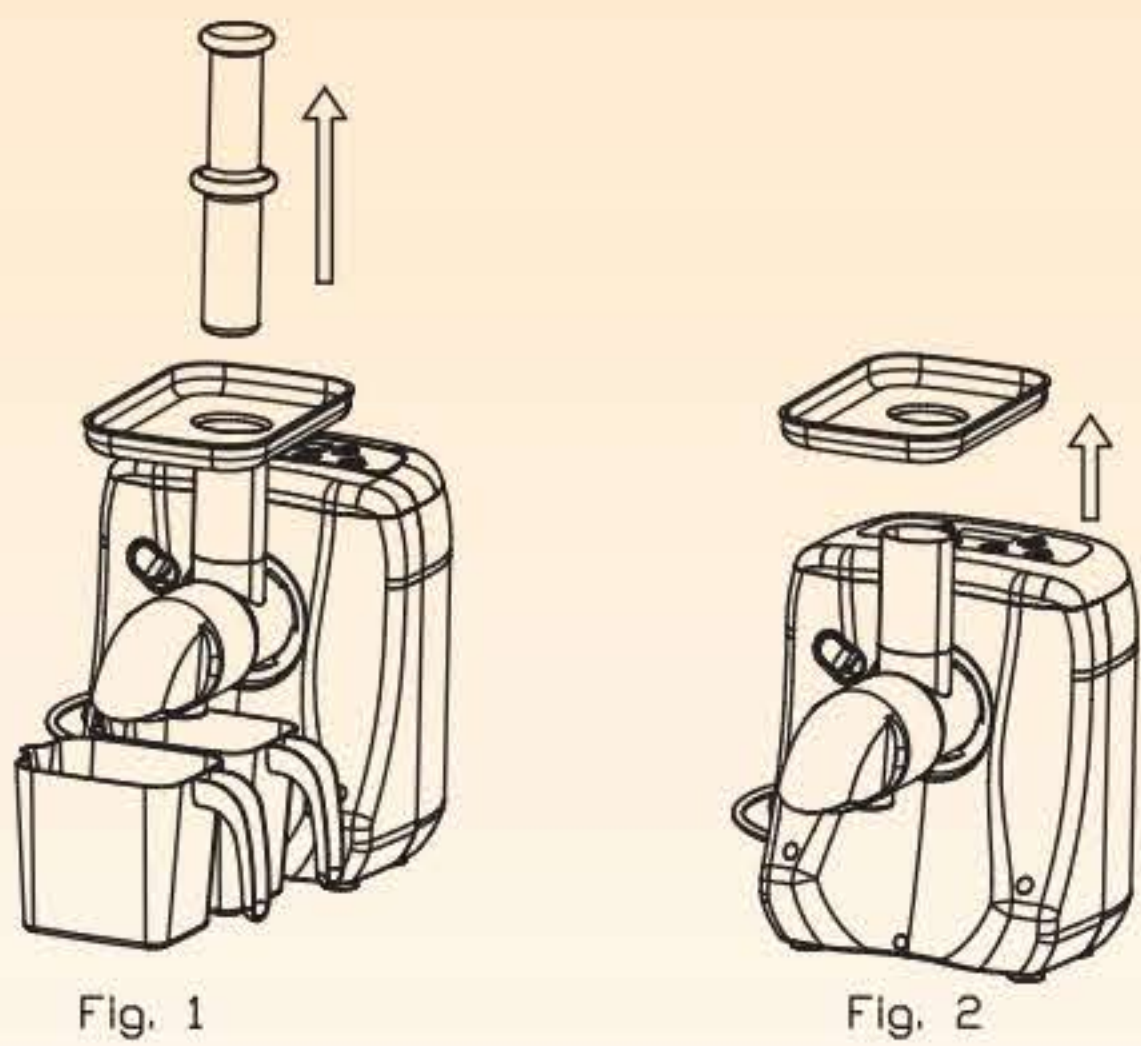
- Switch off the KENT Cold Pressed Juicer+
- Unplug the KENT Cold Pressed Juicer+
- Wait until the KENT Cold Pressed Juicer+ has completely stopped
- Disassemble the KENT Cold Pressed Juicer+ (refer Disassembling KENT Cold Pressed Juicer+ section) and clean it



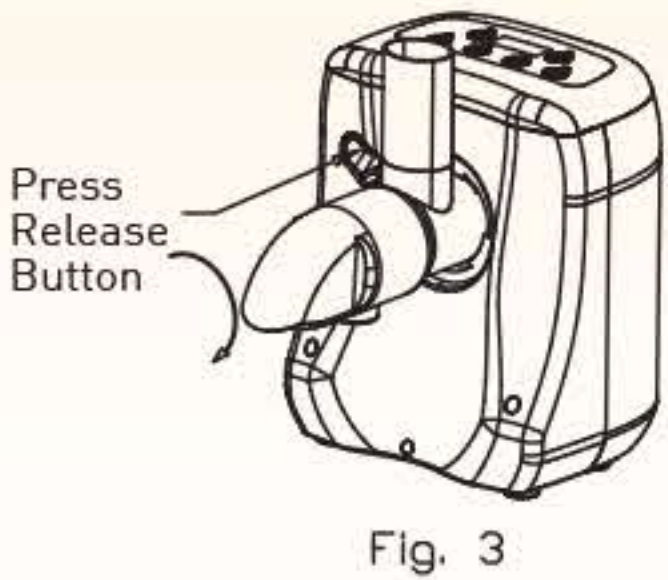
# DISASSEMBLING YOUR KENT COLD PRESSED JUICER+

Before cleaning, disassemble the KENT Cold Pressed Juicer+ in the following manner:

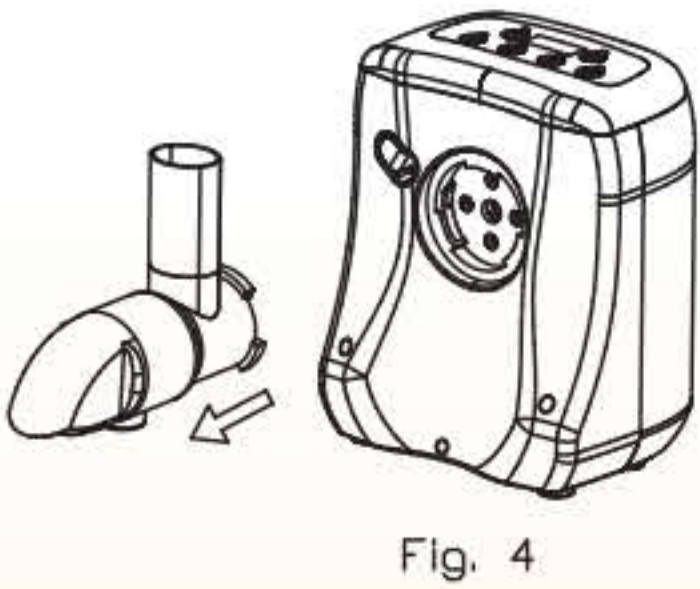
1. Take out the Pusher & Food Tray as shown in the fig 1 & 2



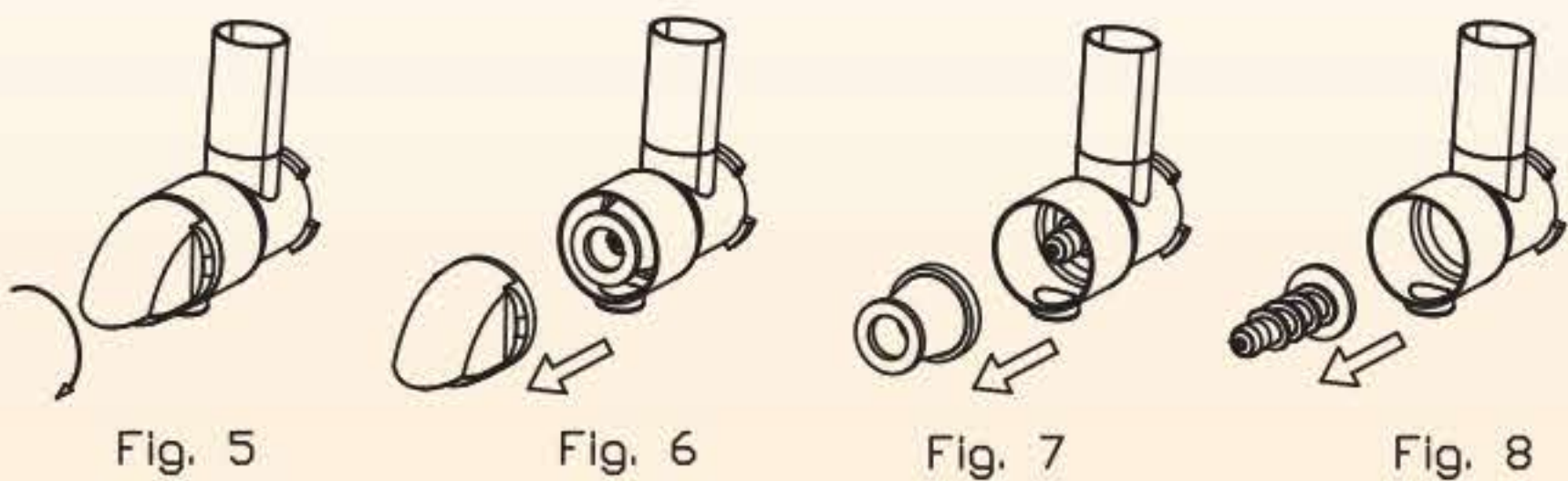
2. Release the juice extractor assembly by pressing the release button & rotate the assembly in clockwise direction as shown in the fig. 3



3. Take out the juice extractor assembly by pulling it gently as shown in the fig. 4



4. Disassemble the juice extractor assembly by rotating the locking cover in the clockwise direction & pull the locking cover, filter screen & squeezer as shown in fig. 6,7,8 & 9



## Cleaning the Juicer

1. Use a soft brush to get the pulp out.
2. Dip cleaning brush into warm water with a little detergent and clean the removed components. Then wash under tap water.
3. You may use a wet cloth which has been wrung dry to clean the motor unit, but water must not go inside the motor unit.

## Warning

- Never immerse the motor unit in water nor rinse it under the tap.
- Do not wash the strainer with bare hands in case of starch.



# IMPORTANT SAFETY INSTRUCTIONS

When using an electrical appliance, basic precautions should always be followed, including the following:

1. Unplug, when not in use and before servicing.
2. To reduce the risk of electric shocks, do not use near or on wet surfaces.
3. Use the appliance only as described in the manual.
4. Do not use the appliance if the cord or the plug is damaged or worn out. Replace the damaged cord or plug immediately.
5. Do not try to service the appliance on your own. Send it to an authorized service center only.
6. Keep the cord away from heated surfaces.
7. Do not unplug the appliance by pulling the cord. Always unplug by pulling out the plug.
8. To avoid electric shocks, do not use the appliance with wet hands.
9. Keep hair, loose clothing, fingers and all parts of the body away from moving parts.
10. Turn all controls off before unplugging.
11. Never use the appliance without the strainer in place.
12. This appliance is suitable for indoor use only.
13. Keep away from children.



# TROUBLESHOOTING

PROBLEM	POSSIBLE CAUSE	POSSIBLE SOLUTION
The juicer stops working.	1. Power cord not plugged in.	1. Connect the power cord.
	2. Input power supply not as per the recommendations.	2. Check if the input voltage is in accordance with the indicated voltage of the product.
	3. It has been working for a long duration.	3. Let it cool down and restart it only after it completely cools down.
	4. Motor failure.	4. Send it to a KENT authorized service centre.
The motor unit gives out an unpleasant smell.	1. The motor itself has disagreeable smell.	1. This is not unusual. It is normal for the first few times during use.
	2. Appliance is over-loaded.	2. Check the quantities you are processing and the processing time.
The appliance makes a lot of noise, gives out unpleasant smell, is too hot to touch, produces smoke, etc.	Motor failure.	Switch off the appliance and unplug it. Go to the nearest KENT authorized service centre for assistance.
The juice comes out from the top of the machine.	The cover of the transparent cage is not installed or not properly installed.	Re-install the cover of the transparent cage.
The strainer is jammed.	1. The product cannot be used for some fruits.	1. The product cannot be used for fruits and vegetables containing long fibre, high fibre or fibre that is too hard.
	2. The processing amount is too much.	2. Turn off the machine and pull the plug. Clean the feed pipe, spiral mixer, strainer and cover after the juicer completely stops working. Check the processing amount and time as per user manual.



# TECHNICAL SPECIFICATIONS

Product Name	KENT Cold Pressed Juicer+
Product Code	116022
Quantity	01 Unit with Accessories
Net Weight	4.05 kg
Input Power Supply	Single Phase 220 V AC, 50 Hz
Maximum Power	150 W





July, 2018



Manufactured by:  
KENT RO SYSTEMS LTD.  
1) Khasra No. 93, Village-Bantakhedi, Tehsil-Roorkee,  
District-Haridwar, Uttarakhand-247 668, India.  
2) A-6, Sector-87, Noida-201306, U.P., India.

Marketed by:  
KENT RO SYSTEMS LTD.  
E-6, 7 & 8, Sector-59, Noida, U.P.-201 309, India.  
E-mail: [sales@kent.co.in](mailto:sales@kent.co.in)

For customer complaints, contact our  
Customer Care Officer at: E-6, 7 & 8, Sector-59,  
Noida, U.P.-201 309, India. Call: 92-789-12345  
E-mail: [service@kent.co.in](mailto:service@kent.co.in) or visit us at [www.kent.co.in](http://www.kent.co.in)