



Imported & Marketed by:
KENT RO SYSTEMS LTD.

E-6, Sector-59, Noida, U.P.-201 309, India.

For customer complaints, contact our Customer Care Officer at:

E-6, Sector-59, Noida, U.P.-201 309, India. Call: 92-789-12345

E-mail: service@kent.co.in or visit us at www.kent.co.in

Made In People Republic of China

KENT SWIFT

HANDHELD GARMENT STEAMER



Powerful & continuous steam to smooth out wrinkles.



Lightweight & compact design, easy to use.



Ideal for delicate fabrics like Sarees, Shawls & Suits.



INSTRUCTION MANUAL



KENT SWIFT

HANDHELD GARMENT STEAMER

Welcome
to **KENT**

Dear Customer,

Congratulations on your purchase and welcome to KENT.

At the outset, allow us to thank you for your trust in KENT Swift Handhled Garment Steamer. It is designed to include many superior features that help you achieve the best results.

We are confident that you will be more than satisfied with its performance and that it will serve your need for safer and cleaner living without any compromise.

This manual would help you in getting the best out of your KENT Swift Handhled Garment Steamer. Please go through the booklet to familiarize yourself with its operation and maintenance.

With its robust built and quality, you can look forward to years of trouble-free service. In case you require any further information, please contact your nearest KENT dealer/ branch.

Happy Living!
KENT RO Systems Ltd.



KENT SWIFT

HANDHELD GARMENT STEAMER

TABLE OF CONTENTS

1. Introduction	1
2. Features of KENT Swift Handheld Garment Steamer	1
3. Items in the box	2
4. Know Your Product	2
5. Using the Accessories	3
6. Assembling your KENT Swift Handheld Garment Steamer	3
7. How to Operate	6
8. Cleaning and Maintenance	7
9. Troubleshooting	8
10. Caution	9
11. Technical specifications	13

KENT SWIFT

HANDHELD GARMENT STEAMER

Introduction

We, at KENT have always believed in delivering quality products with industry-proven performance, maintaining a strong reputation for quality that speaks volumes about the dedication and commitment to excellence. This ethos made us embark on the journey to develop innovative solutions for cleaning the water we drink, fruits & vegetables we eat and the air we breathe.

Continuing with the tradition, we now present the KENT Swift Handheld Garment Steamer, which will redefine your ironing experience with its high quality and excellent performance.

KENT Swift Handheld Garment Steamer is one solution for all your ironing needs. It can handle both heavily wrinkled fabrics and delicate ones with ease so you can efficiently make your clothes wrinkle-free with minimum effort.

Features of KENT Swift Handheld Garment Steamer

1. Powerful performance of KENT Swift Handheld Garment Steamer 1300 W
2. Vertical steam ideal for delicate fabrics like Sarees, Shawls & Suits
3. 20 g/min output of continuous steam
4. Ceramic coated steam plate
5. 30 minutes of continuous steam
6. Large water tank capacity of 260 ml
7. Lightweight and compact design
8. LED indicator for power On/Off

KENT SWIFT

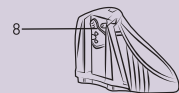
HANDHELD GARMENT STEAMER

Items in the box

- | | |
|--|-------|
| 1. KENT Swift Handheld Garment Steamer | : 1 N |
| 2. Detachable Fabric Lint Brush | : 1 N |
| 3. Water Pouring Cup | : 1 N |
| 4. User Manual | : 1 N |

Know your product

1. Detachable fabric lint brush
2. Ceramic coated steam plate
3. Pilot lamp
4. Steam switch
5. Water tank lock
6. Water tank
7. Flex sleeve
8. Sealing plug



KENT SWIFT

HANDHELD GARMENT STEAMER

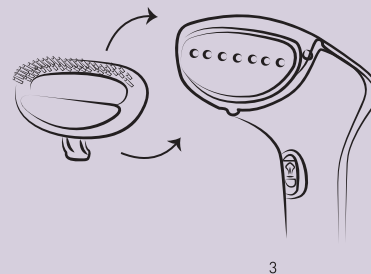
Using the Accessories

1. Detachable Fabric Lint Brush - This device has dual functionality: firstly, it comes with a lint brush to effectively remove lint from clothing, and secondly, it can be utilized without the brush for a more precise steaming experience.
2. Water Pouring Cup - It is used for filling water.

Assembling your KENT Swift Handheld Garment Steamer

1. Position the protruding points located at the base of the of the detachable fabric lint brush to align with the grooves situated at the bottom of the steam head.
2. Apply pressure to the upper section of the detachable fabric lint brush to securely insert its convex point into the corresponding point at the top of the steam head assembly.

Note: Please wait for the KENT Swift Handheld Garment Steamer to cool down before replacing or removing accessories.



KENT SWIFT

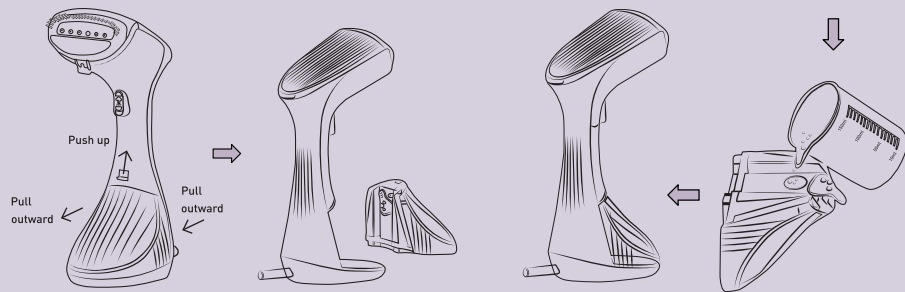
HANDHELD GARMENT STEAMER

How to fill & drain water

Fill up:

Lift the tank latch upwards, then grip both sides of the tank with your fingers to remove it. Unseal the water tank plug and use the provided measuring cup to pour filtered water into the tank, ensuring it doesn't surpass the maximum water level (approximately 260 ml).

Drain water: Detach the water tank and unlock the sealing plug. Empty any remaining water from the tank, then replace and secure the plug. Reinsert the water tank into the main unit.



4

KENT SWIFT

HANDHELD GARMENT STEAMER

Steam switch instructions

This product features a meticulously designed steam switch with self-locking and point operation modes, allowing you to effortlessly switch between two steam modes.

1. To activate the steam mode, simply press and lock the steam switch. You can then press the steam spray button to initiate the steam or release it to halt the steam spray. (Figure A)
2. Press down the switch to engage continuous steam operation (Figure B). To disengage, simply push the steam switch upward to unlock it and cease steam output.

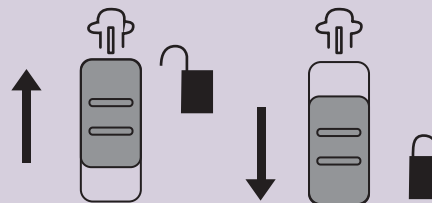


Figure A

Figure B

5

KENT SWIFT

HANDHELD GARMENT STEAMER

How to Operate

1. Before using, check the steam switch and confirm that the lock is in the upward position (Figure A). Begin operation only after the device has been heated.

Upon connecting the power supply, the red indicator light will illuminate to indicate heating. It typically takes around 25 seconds for the green indicator light to turn on, signalling it is ready for use. If heating is not yet complete, pressing the switch key may result in water spraying.

2. Place your clothes or fabric in a suitable position for steaming.
3. Before use, pour water into the water tank of the KENT Swift Handheld Garment Steamer, ensuring it does not exceed the maximum level of approximately 260 ml. After filling, tightly cover the sealing plug of the water tank and install the required accessories.
4. During the ironing process with the KENT Swift Handheld Garment Steamer, always ensure that the steam outlet is directed away from you and others to prevent potential damage from the high temperature of the steam.
5. If you need to stop the steam, simply release the steam opening key on the handle or unlock the steam lock.
6. After each use, remember to unplug the device and drain any remaining water from the tank to prevent water leakage and the accumulation of scale.
7. Once the machine has completely cooled down, you can remove the parts and wipe them before storing the device.

KENT SWIFT

HANDHELD GARMENT STEAMER

Cleaning and Maintenance

1. Unplug and wait for the unit to cool completely.
2. Remove the mounted accessories. Clean them with a cloth or soft brush and let them dry.
3. Open the sealing plug at the bottom of the water tank. Drain the remaining water, restore the sealing plug, and wipe the water tank clean.
4. Use a soft cleaning cloth to gently wipe the surface of the KENT Swift Handheld Garment Steamer. Place the cleaned machine into a bag and store it in a cool & ventilated place. If you hear the pump pumping due to water remaining in the tank, switch off the device immediately and unplug the water tank.

Tip: Clean the unit after each use.

Scale removal instructions

To keep your KENT Swift Handheld Garment Steamer running smoothly, remove scale build-up if you notice steam slowing down or stopping intermittently. Scale is a build-up of calcified material on metal parts which clogs the tiny holes on the ceramic steam plate and leads to less or no steam release. How often you remove the scale depends on how hard your water is and how frequently you use the garment steamer.

Methods of removing scale

1. Please mix 1/3 white vinegar and 2/3 water and fill the water tank.
2. Plug in the power and wait for the light to turn off. Then, press the switch to evaporate the water and vinegar mixture. Afterward, unplug the power and allow it to cool for 30 minutes.
3. Repeat the process 2-3 times until the steam ejection speed returns to normal. Remember to use a fresh mixture of vinegar and water each time for cleaning.
4. After removing the scale, repeat the process with filtered water before ironing clothes.

KENT SWIFT

HANDHELD GARMENT STEAMER

Troubleshooting

Problem	Reason	Solution
It isn't emitting any steam	It is either switched off or the water level in the tank is low or insufficient.	Check if the product is switched on & if the water level is sufficient to steam.
The machine is not heating up.	It is unplugged from the socket.	Plug in the machine properly.
The steam is not flowing smoothly.	Scale builds up in the tank	Remove the scale from the tank.

KENT SWIFT

HANDHELD GARMENT STEAMER

Caution

1. When using the KENT Swift Handheld Garment Steamer for the first time, it is advisable to test it on old clothes. This helps to ensure there are no stains from the manufacturing process or transportation.
2. Stubborn wrinkles may require multiple bursts of steam to eliminate them.
3. Avoid using the steamer on clothes labelled 'do not iron' or 'do not iron at high temperature'.
4. Be cautious when hanging clothes on doors, as the strong steam could damage the surface. Choose an appropriate location for steaming.
5. If the temperature decreases during operation, the machine will automatically heat up, indicated by the red light. Once heating is complete, the light will go off, indicating readiness to continue ironing.
6. Test the colour fastness in an inconspicuous area before steaming. For linen curtains, towels, handkerchiefs, and napkins, it's best to iron them on a pole or towel rack.

KENT SWIFT

HANDHELD GARMENT STEAMER

WARRANTY CARD

Product: KENT Swift Handheld Garment Steamer

Product Code: 116155

Serial No.:..... Dealer Stamp:.....

Customer Details:

Customer's Name:

Customer's Address:

Customer's Phone No.:

Warranty Details:

Invoice Date..... Invoice No.:.....



Imported & Marketed by: **KENT RO SYSTEMS LTD.**

E-6, Sector-59, Noida, U.P.-201 309, India.

E-mail: service@kent.co.in | Website: www.kent.co.in | Customer Care: 92-789-12345

KENT SWIFT

HANDHELD GARMENT STEAMER

TERMS & CONDITIONS OF WARRANTY

KENT warrants all new products manufactured by it to be free from defects in material and workmanship under normal usage and service from the date of purchase as under:

1. The Warranty period commences from the date of purchase by the first end-user. During this Warranty period of one year, KENT or its Authorised Service Provider (ASP) will replace or repair any part of KENT Swift Handhld Garment Steamer, that in the opinion of KENT or its ASP, would be defective in operation due to faulty material or workmanship (i.e. manufacturing defects) with the exception of consumables.
2. The product's plastic body is not covered under Warranty and hence, it must be handled with care to guard against breakage.
3. The original purchaser of the unit can avail services under Warranty at the point of sale by producing the damaged part(s) along with the original invoice.
4. This Warranty is void if the unit is not operated under normal conditions or according to the instructions given in the manual.
5. Product returned to KENT or its ASP for Warranty examination must be shipped freight prepaid.

6. KENT or its ASP shall not be held liable for claims exceeding the cost of repair of the defects in workmanship.
7. This Warranty Agreement shall not be interpreted to render KENT or its ASP liable for injuries or damages of any kind - direct, consequential or contingent to persons or property.
8. KENT or its ASP shall not be held responsible by representative or buyer for failure to abide by any of the obligations of this Warranty Agreement, if such failures are the result of circumstances of Forces Majeure such as (but not limited to), floods, earthquakes, transportation strikes, labour disputes with outside suppliers or any other conditions beyond the control of KENT or its ASP.
9. KENT or its ASP shall not be held liable for repair or alterations made without prior written approval for product failures resulting from the lack of proper maintenance.
10. This Warranty Agreement excludes all products/component parts or damage to any part of this KENT Swift Handhld Garment Steamer which in the opinion of KENT or its ASP have been subjected to misuse; misapplication; negligence; alteration; accident or operation contrary to our instructions. Incompatibility with accessories not installed by KENT or its ASP, or that have been repaired with

component parts other than manufactured by or obtained from KENT or its ASP. Damage caused by freezing, flood, fire or Act of God is not covered by this Warranty. In all such cases, regular charges will apply. This limited Warranty does not include service to diagnose a claimed malfunction in this unit.

11. KENT reserves the right to alter or improve design and specifications at any time, without any contingent obligations to prospective buyers or owners of the products previously sold.
12. Any disagreements and obligations based upon the purchase of KENT products and thereby imposed on KENT or its ASP shall be governed by and construed according to the laws of INDIA and subject to the jurisdiction of Delhi Courts only.
13. KENT or its ASP assumes No Warranty liability in connection with this KENT Swift Handhld Garment Steamer other than that specified herein. This Warranty is in lieu of all other warranties, expressed or implied, including warranties of fitness for a particular purpose. KENT or its ASP does not authorise any person or representative to assume for them any other obligations on the sale of this KENT Swift Handhld Garment Steamer.

KENT SWIFT

HANDHELD GARMENT STEAMER

14. Under no circumstances, the liability of KENT or its ASP shall exceed the value of the product.
15. Under no circumstances are the terms mentioned above negotiable and no employee of KENT or its ASP has the authority to supersede them.

TECHNICAL SPECIFICATIONS

Product	KENT Swift Handheld Garment Steamer
Product code	116155
Net weight	0.79 kg
Total power consumption	1300 W
Water tank capacity	260 ml
Steam flow	20 g/min
Input power supply	Single Phase 230 V AC, 50 Hz.

