



# KENT QUICK EGG BOILER



Get Perfectly Poached & Boiled Eggs without any Hassle



Automatic Shut Down after Egg Boiling



Stainless Steel Heating Plate



Can Boil up to 7 Eggs or Poached eggs



Can Boil as per Choice: Hard, Medium & Soft



Makes Perfectly Poached Eggs

7 Up to EGGS



New Egg Poaching Tray Inside

Marketed by:  
KENT RO SYSTEMS LTD.  
E-6, Sector-59, Noida, U.P.-201 309, India  
E-mail: sales@kent.co.in  
Made in India

# Welcome to KENT

**Dear Customer,**

Congratulations on your purchase and welcome to KENT!

At the outset, allow us to thank you for your trust in KENT Smart Chef Appliances. At KENT, we take pride in our reputation for quality products and industry proven performance. We are certain that you will be more than satisfied with KENT Quick Egg Boiler performance and that it will serve you and your family's need without any compromise.

This guide will help you in getting the best out of your appliance. Please go through the booklet to familiarize yourself with the operation and maintenance.

With the robust build and high quality, you can look forward to years of trouble-free service. In case you require any further information, please contact your nearest KENT dealer or branch.

Bon Appétite!

**KENT RO Systems Ltd.**

## TABLE OF CONTENTS

1. Introduction .....	1
2. Features of KENT Quick Egg Boiler .....	1
3. Know Your Product .....	1
4. Items in the Box .....	2
5. Using KENT Quick Egg Boiler .....	2
6. Using Accessories .....	2
7. Procedure to Boil Eggs .....	3
8. Important Safety Instructions .....	5
9. Cleaning and Maintenance .....	5
10. Troubleshooting .....	6
11. Technical Specifications .....	7

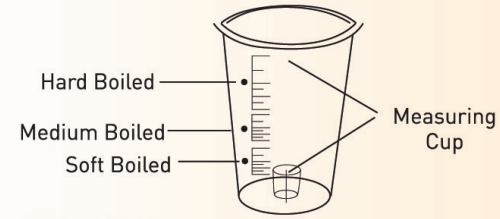
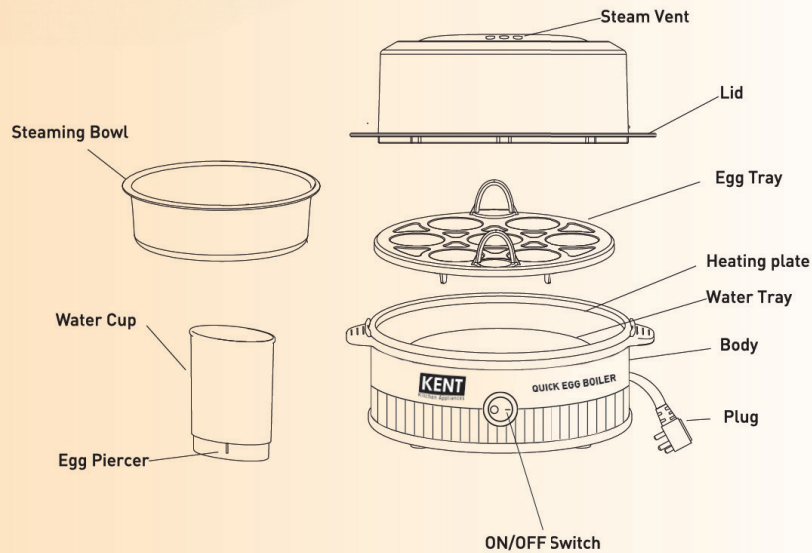
## INTRODUCTION

Presenting the all-new KENT Quick Egg Boiler, to fulfill all your nutritional needs. A well designed appliance with flat heating plate for faster boiling of eggs, be it at home, hostel room or when you are travelling.

## FEATURES OF KENT INSTANT EGG BOILER

1. 3 Boiling modes: hard, medium and soft.
2. Simple operation: just add water, eggs and plug in.
3. Stainless Steel heating plate for faster boiling.
4. Get perfectly poached eggs with egg poaching tray.
5. Easy and quick one-touch operation.
6. Turns off automatically when water dries.
7. Safety features like automatic power-off and overheating protection.

## KNOW YOUR PRODUCT



## ITEMS IN THE BOX

KENT Quick Egg Boiler	: 1 N
Steaming Bowl	: 1 N
Egg Needle	: 1 N
Measuring Cup	: 1 N
Warranty Card	: 1 N

## USING KENT QUICK EGG BOILER

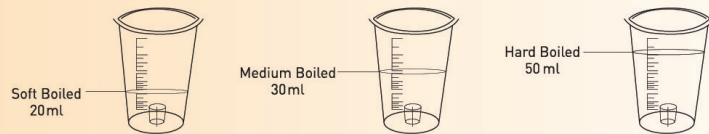
1. Check the unit for damages. Do not use in case of any damages.
2. Before switching on the appliance, make sure that your home's main voltage corresponds to the operating unit.
3. Clean the parts of the Quick Egg Boiler thoroughly before using the appliance for the first time (see 'Cleaning & Maintenance' section).
4. Make sure that all parts are completely dry before you start using the appliance.
5. Shut the main power supply after the appliance is auto shut to avoid dry-boiling.

## USING ACCESSORIES

1. Steaming bowl can be used for poached egg.
2. Egg needle is used to puncture the egg before we start boiling.

## PROCEDURE TO BOIL EGGS

1. Place the Quick Egg Boiler upright on a dry, sturdy and flat surface.
2. Fill the provided measuring cup with normal water depending on the desired hardness and the number of eggs, using the respective markings on the measuring cup or as per the table here. For example, if you want 4 medium boiled eggs, fill water cup to the line that corresponds with the medium egg line and the number four. Pour water into the water tray.
3. Pierce the blunt end of the eggs with an egg piercer, as it prevents the eggs from bursting or cracking during the boiling process.



### Recommended Water Quantity to Boil Eggs

No. of Eggs	Hard (Water Quantity)	Medium (Water Quantity)	Soft (Water Quantity)
1	66ml	40 ml	33ml
2	64ml	37 ml	30ml
3	60ml	34 ml	27ml
4	56ml	31 ml	24ml
5	53ml	28ml	21ml
6&7	50ml	25ml	18ml

4. Place the egg-holder on the boiler and place the eggs. Close the lid once done.
5. Plug into the wall outlet and turn on by pushing the ON/OFF switch. The control light will illuminate.
6. When the eggs are ready, the light will turn off, but the product will have to be manually switched off.
7. If you plan to serve the eggs immediately, switch off the appliance. If you want to keep the eggs warm, leave the appliance in on until you are ready to serve them.

8. Remove the egg-holder with the eggs from the water tray and hold them under normal water in case you want to serve them immediately after boiling. Switch off the appliance otherwise the eggs will continue to boil and become harder.
9. After a short cool-down time of approximately 5 minutes, you may use the Quick Egg Boiler again.
10. Unplug the appliance after use.

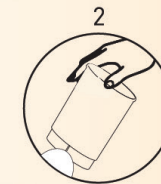
### Caution:

- Use extreme caution as the stainless steel lid becomes extremely hot. Always use the handle to remove the lid.
- During use, the steam hole on the top of the lid gets very hot. Do not touch or cover steam hole when in use.

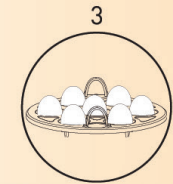
### BOILING EGGS IN 6 EASY STEPS:



1  
Add Water according to No. of Eggs



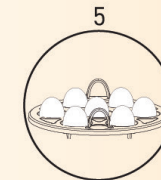
2  
Pierce the Eggs



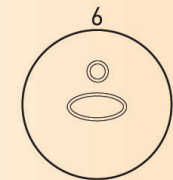
3  
Add Required Number of Eggs



4  
Switch ON Quick Egg Boiler



5  
Get Perfectly Boiled Eggs



6  
Automatically Switches Off when water dries out

## IMPORTANT SAFETY INSTRUCTIONS

1. Please keep the children away when the unit is operating.
2. Avoid injuries by the egg needle.
3. Place the Quick Egg Boiler on a flat surface.
4. Do not cover the top lid with any cloth or plate which might prevent steam to come out.
5. Do not add the water or pull out the plug when the water on the plate has evaporated.
6. Do not touch the heating plate. Doing so might result in an injury.
7. Make sure the appliance is completely dry before using it.
8. Do not try to service the appliance on your own. Send it to an authorised service center only.
9. To avoid electric shocks, do not use the appliance with wet hands.
10. This appliance is suitable for indoor use only.
11. Do not try to repair or alter the appliance on your own. It may cause appliance failure or breakdown.

## CLEANING & MAINTENANCE

1. Always unplug the appliance before cleaning it.
2. Wait until the Quick Egg Boiler has cooled down sufficiently, before cleaning it.
3. To wash, do not immerse the appliance in water.
4. Clean and wipe the appliance after every use.
5. Deodorise or descaling: Add a few drops of lemon when product is cooled and not in use, then clean it with a moist cloth to remove stain/scales from the steel plate.
6. When not in use for a long time, unplug it and store it in a dry ventilated place.

## TROUBLESHOOTING

PROBLEM	POSSIBLE CAUSE	POSSIBLE SOLUTION
Indicator light does not turn on.	There is a connection problem.	Check if the appliance is connected to the mains and if the plug is inserted firmly into the wall socket.
	The light is defective.	Switch off the appliance and unplug it. Go to the nearest KENT authorised service centre for assistance.
	The switch has not been pressed.	Switch on the appliance.
Eggs are over or under done.	Too much or too little water has added.	Add water in right quantity as indicated in the manual.
The eggs are raw.	The boiling process has not started.	You have failed to press the button. Switch on the appliance.
	The heating element is damaged.	Switch off the appliance and unplug it. Go to the nearest KENT authorised service centre for assistance.

## TECHNICAL SPECIFICATIONS

Product	KENT Quick Egg Boiler
Product Code	116183
Net Weight	620 g
Product Dimensions (mm)	158 (L) x 183 (W) x 125 (H)
Maximum Capacity	7 Eggs
Power	370 W
Input Power Supply	Single phase 230 V AC, 50 Hz, Class 1
IP Rating	IPX0